

Further investigation of SR3,SRM vibration.

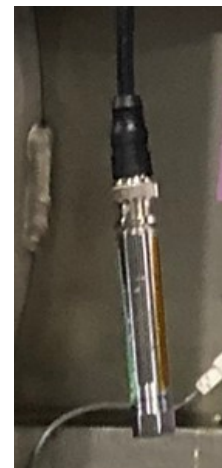
2019/9/27
fujikawa,mori

Purpose

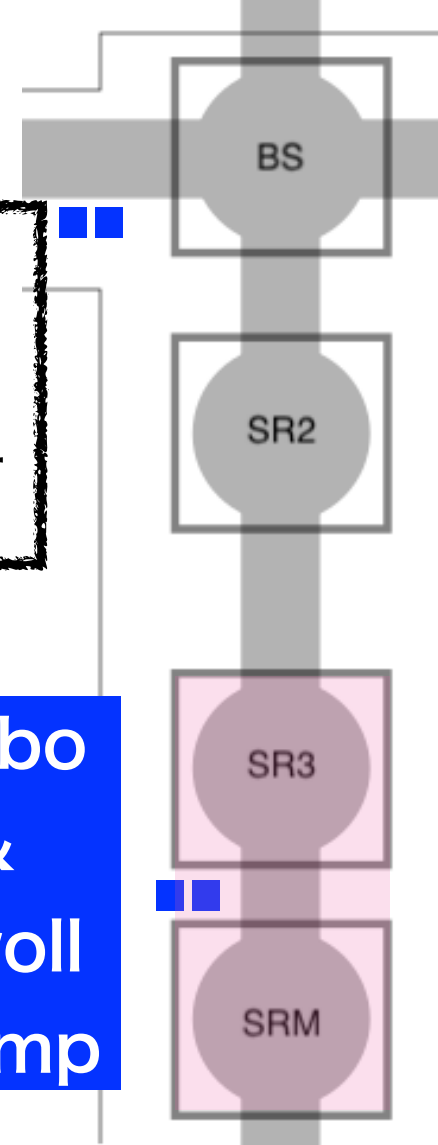
- We measured the vibration around SR chamber.
- We found some noise peaks.
- We checked the vibration noise by turning the coach filter ON / OFF

PEM sensor with measurement

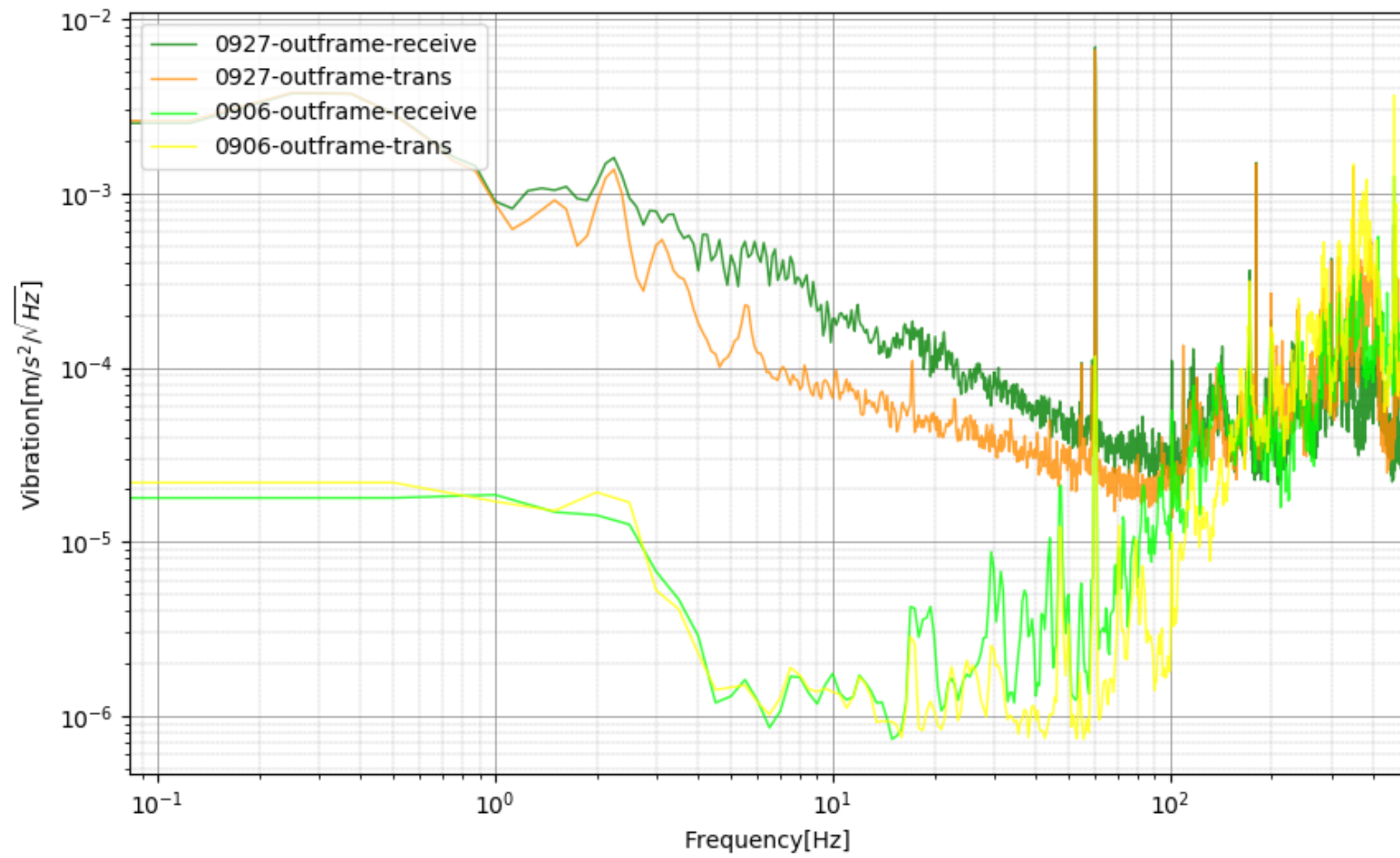
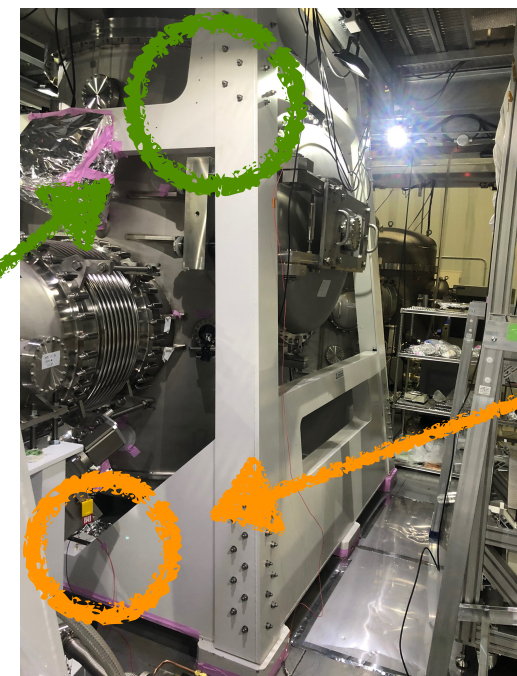
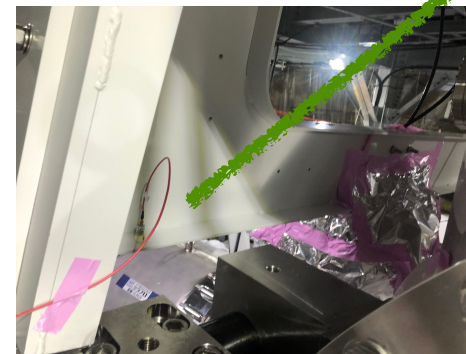
- accelerometer
TEAC 706
s9064 : 0.01022[V/m/s²]
s9065 : 0.00998[V/m/s²]
- microphone
ACO-7147A/4152
sound field type
s9324 : 0.0422[V/Pa]



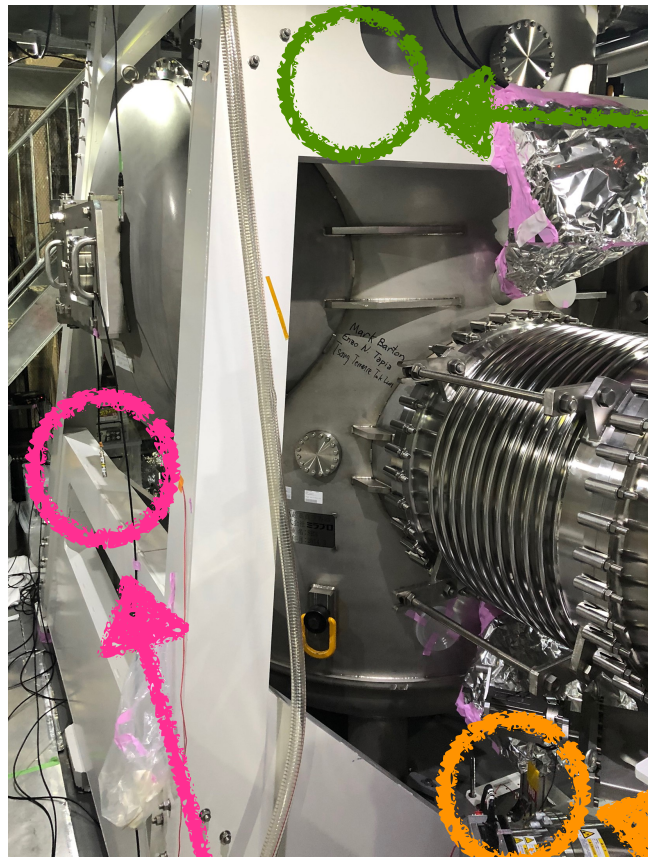
turbo
&
scroll
pump



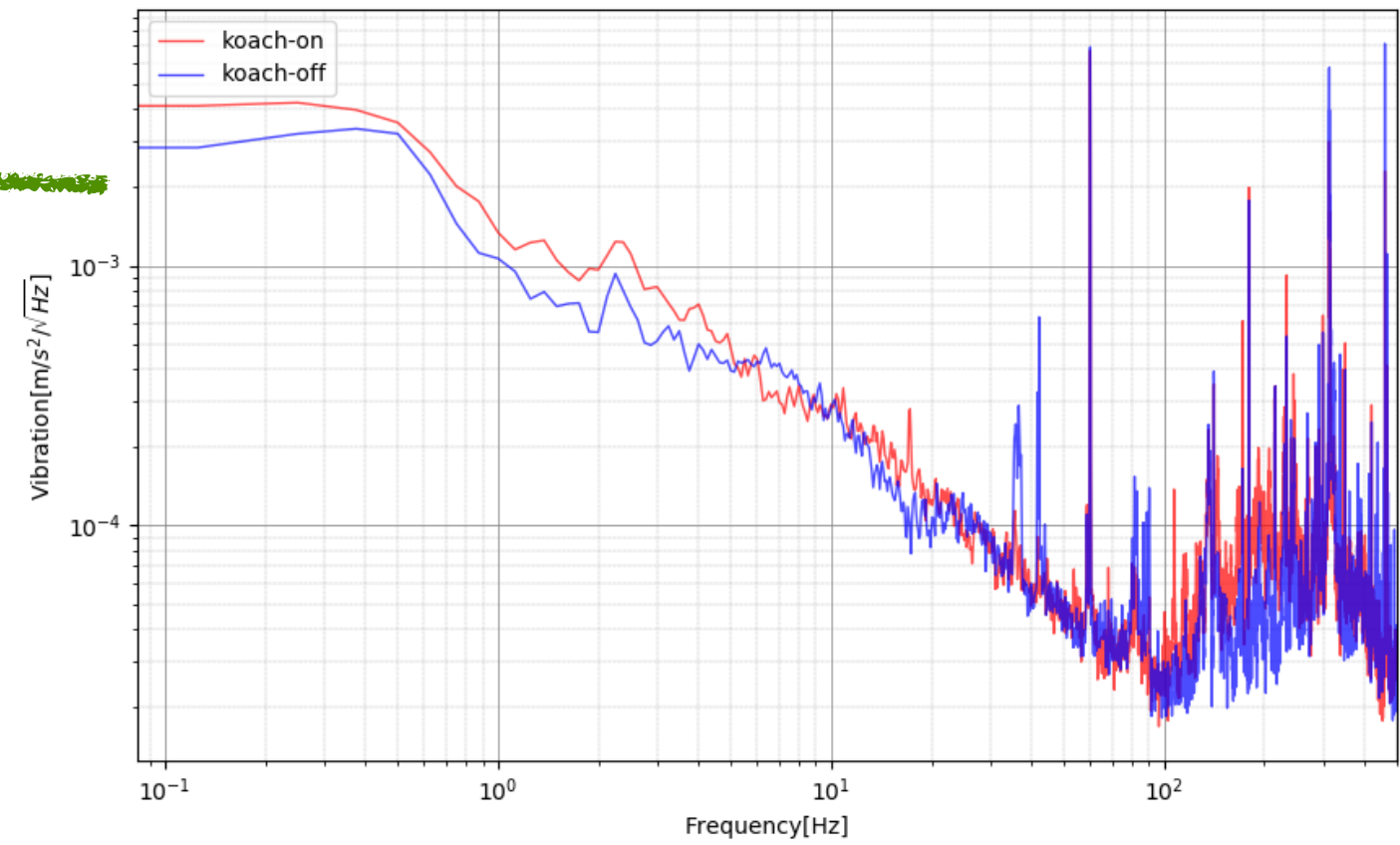
compare 9/6 and 9/27



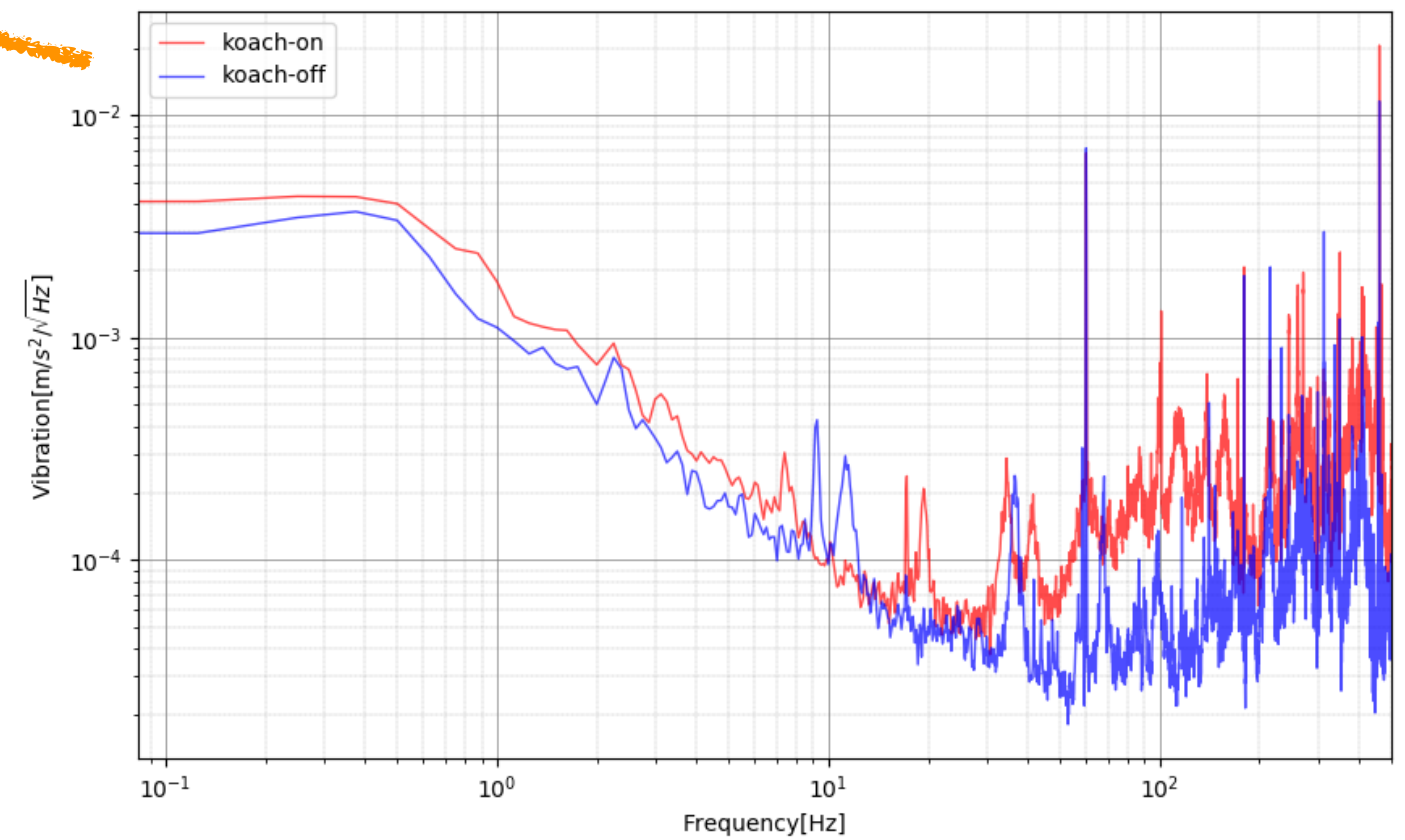
koach filter on/off around SR3



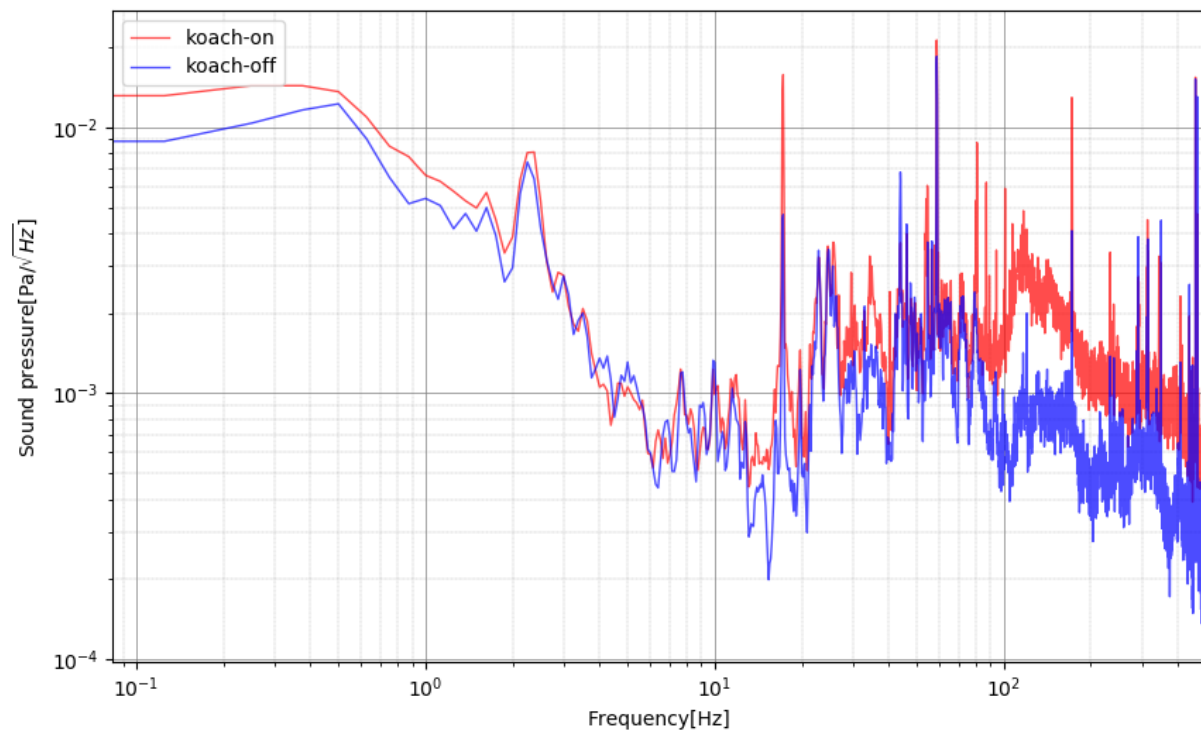
outframe-receive



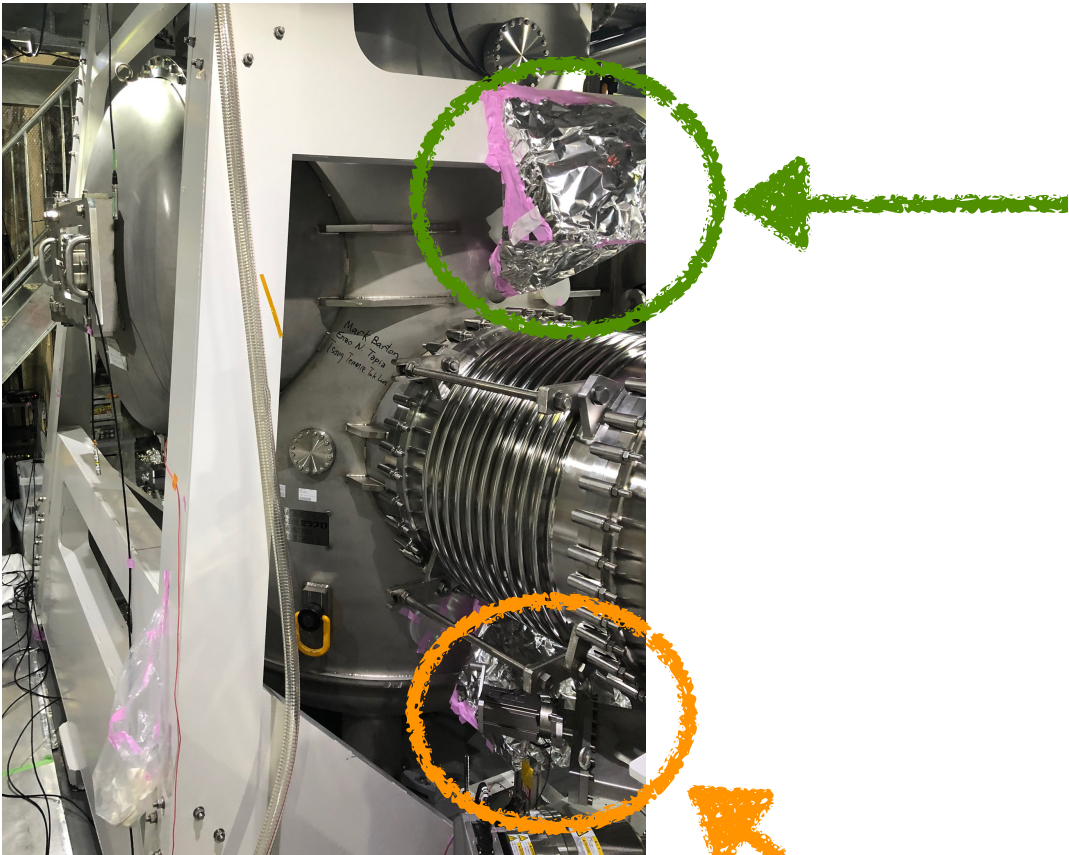
outframe trans



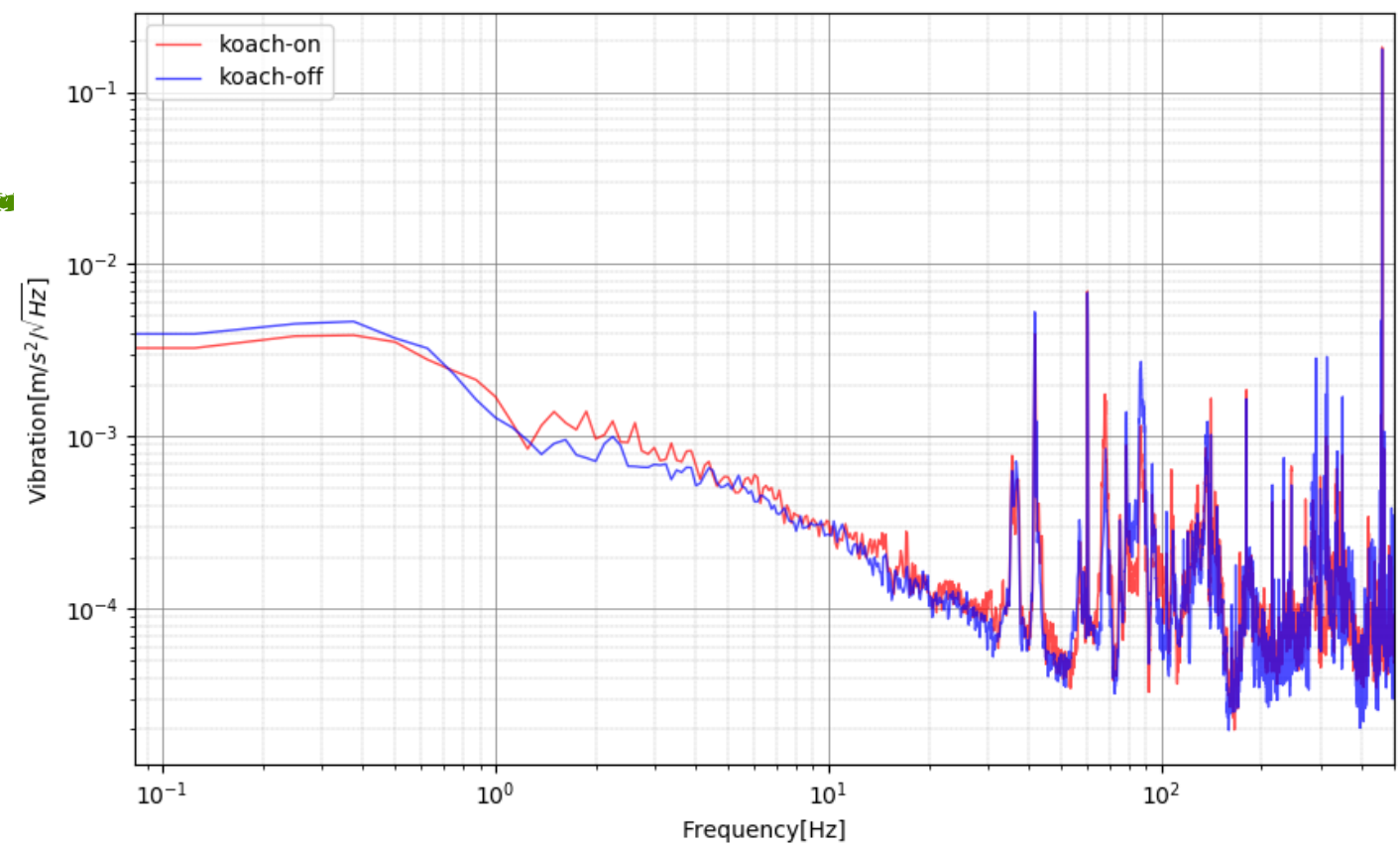
mic



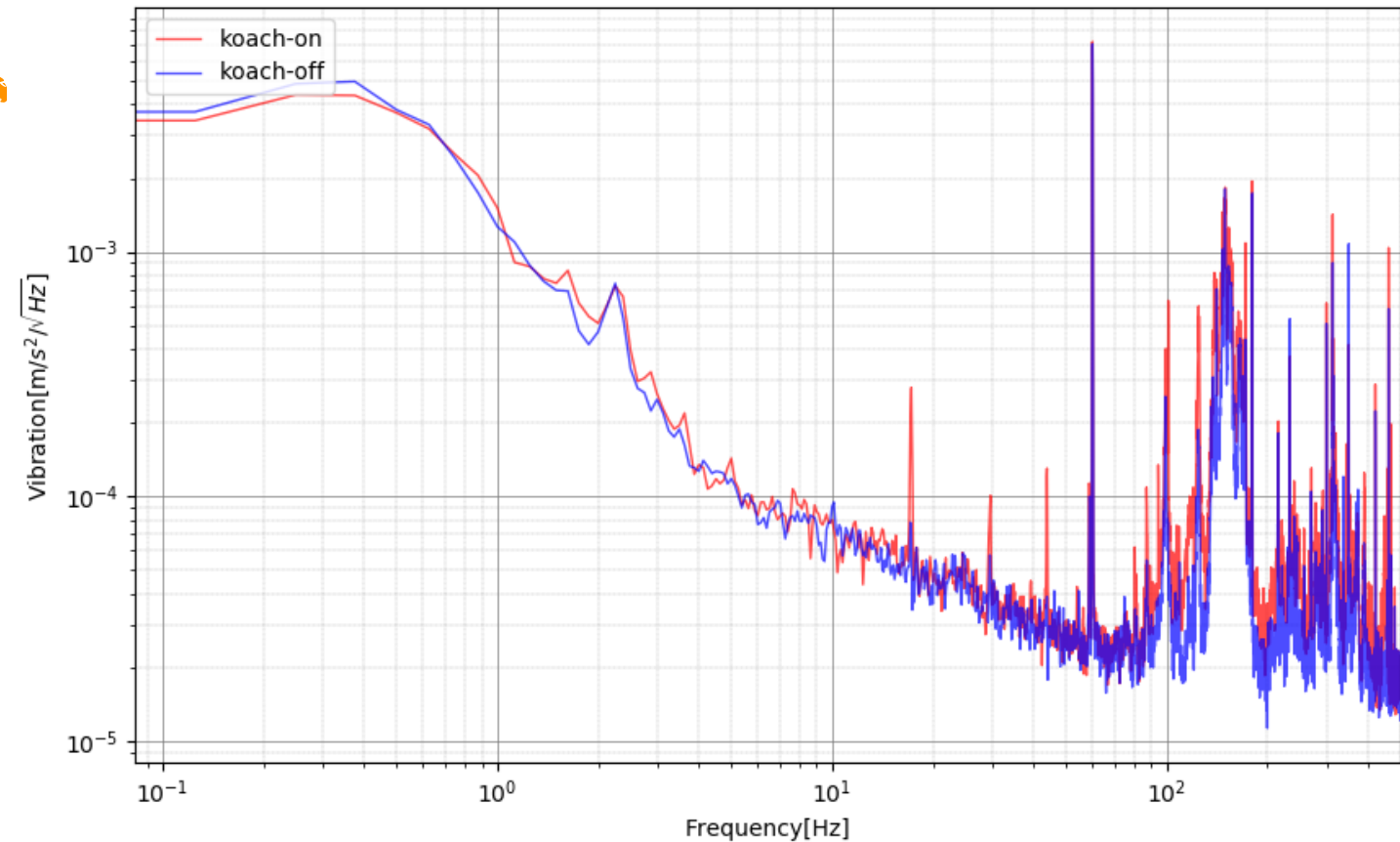
koach filter on/off around SR3



oplev table-receive



oplev table-trans



comment

- 101Hz ,111.5Hz, 172.5Hz peak -> Koach Filter
- around 70Hz~200Hz ->Koach Filter