

Acoustic injection

116Hz REFL table analysis

PEM meeting

2020/06/12

Takaaki Yokozawa

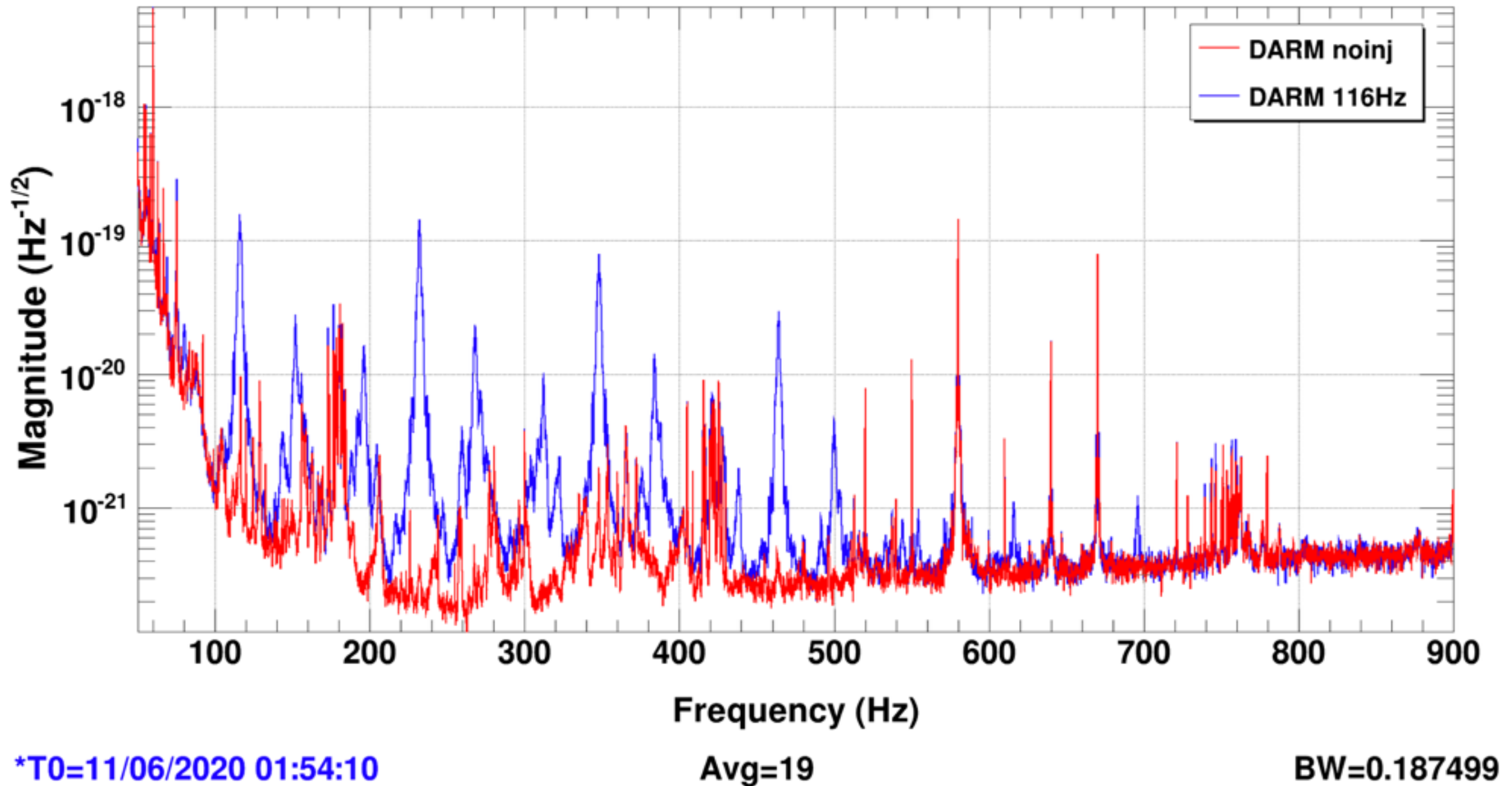
Acoustic injection to REFL table

PEM (Center)
takaaki.yokozawa - 06:19, Friday 12 June 2020 (14506)
Comment to Acoustic Injection (RELF, PSL) (Click here to view original report: 14506)
6/11(Thu)
10:48 Silent
10:50 116Hz 100cnt
10:52 116Hz 200cnt
10:54 116Hz 300cnt
10:59 115Hz 300cnt
11:01 114Hz 300cnt
11:03 117Hz 300cnt
11:05 118Hz 300cnt
11:07 119Hz 300cnt

- We performed the acoustic injection to REFL table and PSL room
 - The detail will be described by Washimi-san
 - Swept sine injection
 - Amplitude linearity check
 - White noise injection
- I focused the 116Hz acoustic injection to REFL table
 - Large up/down frequency converted noise was detected

Acoustic injection to REFL table

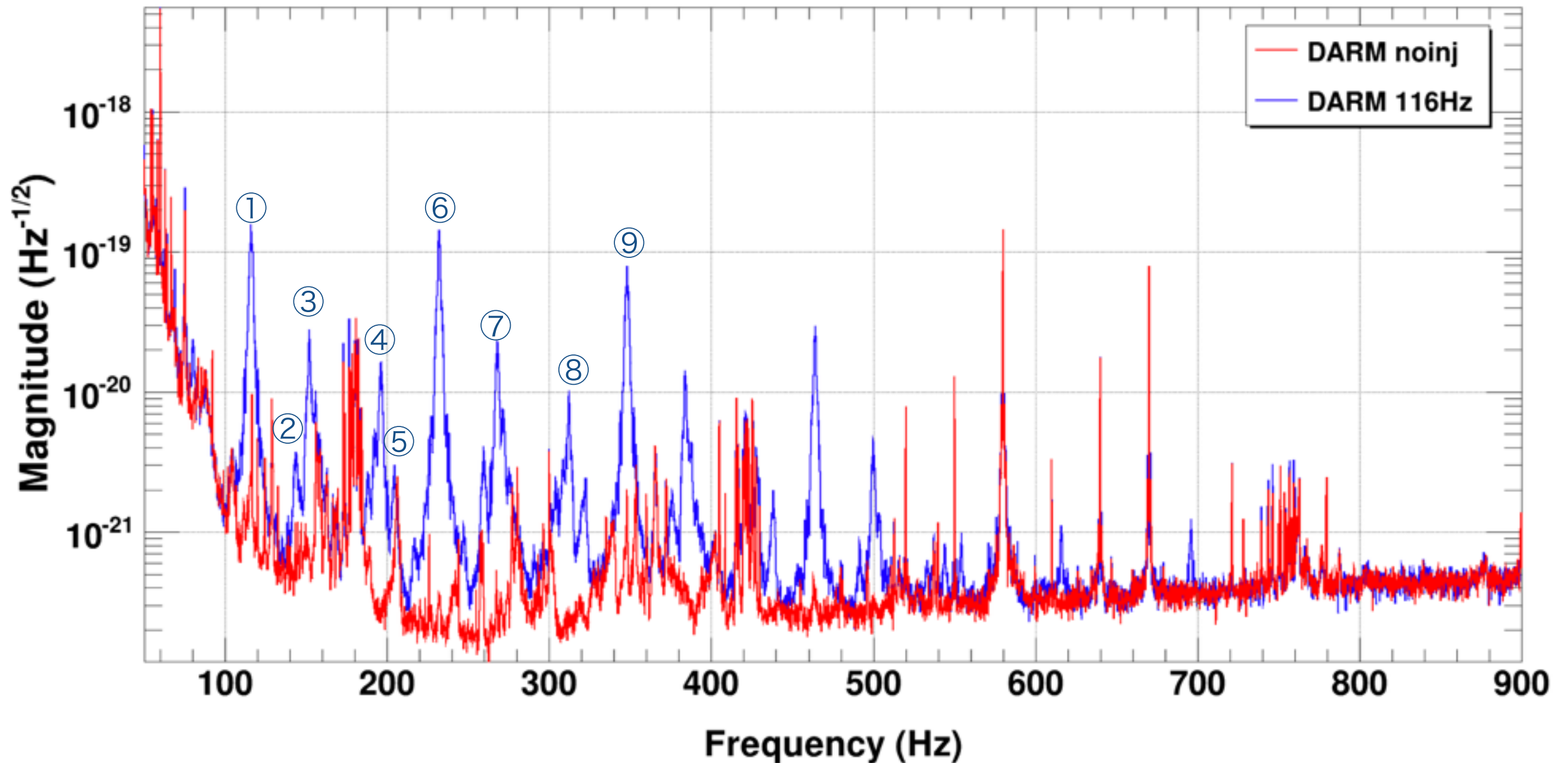
Power spectrum



- We performed the acoustic injection to REFL table and PSL room

Acoustic injection to REFL table

Power spectrum



*T0=11/06/2020 01:54:10

Avg=19

BW=0.187499

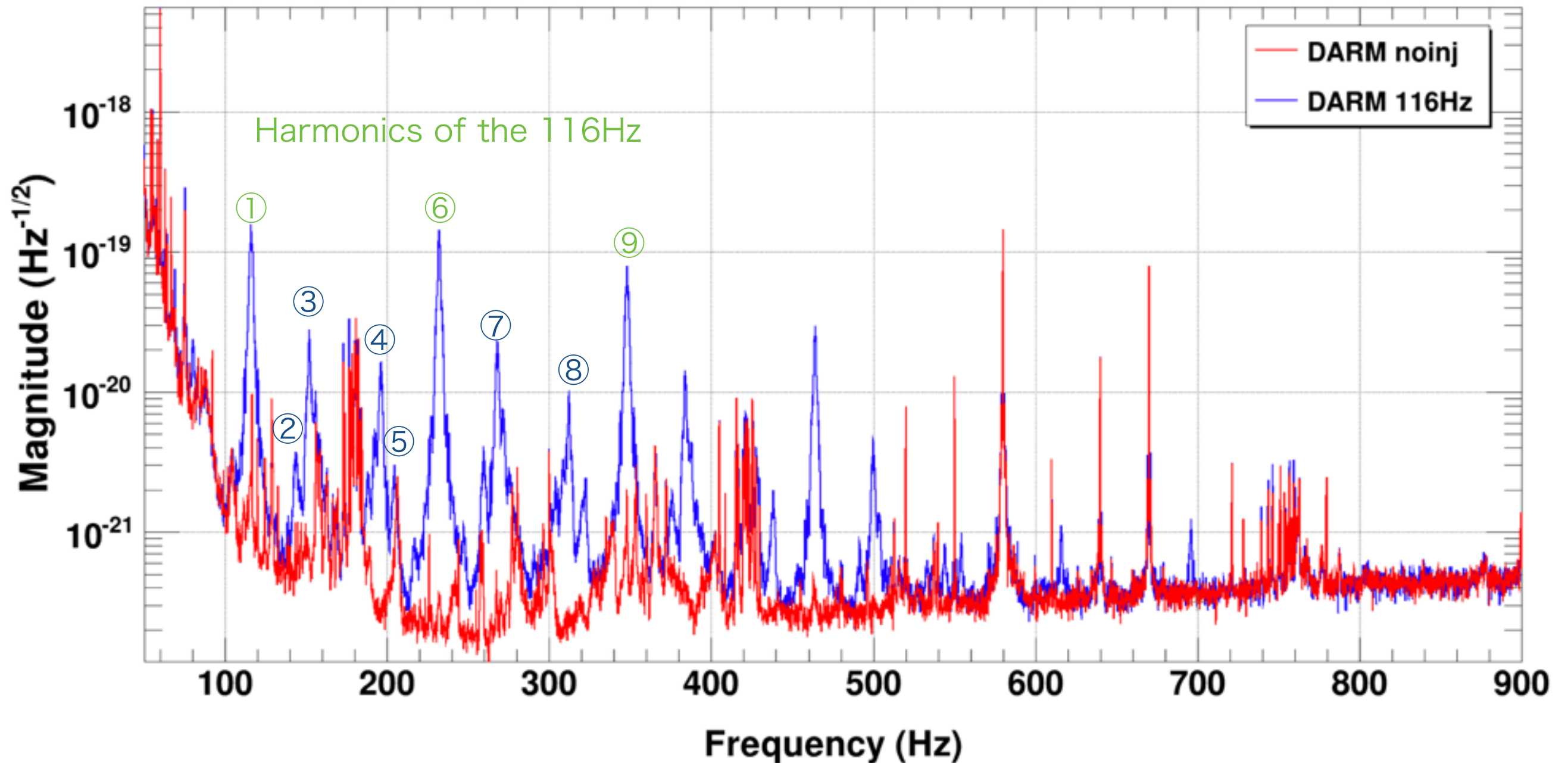
①116Hz ②144Hz ③152Hz (There are 156, 158Hz in noinj) ④188, 192, 196Hz

⑤204Hz (There are 206Hz in noinj) ⑥232Hz ⑦259.5, 268, 271, 275Hz ⑧312, 322Hz

⑨348Hz

Acoustic injection to REFL table

Power spectrum



*T0=11/06/2020 01:54:10

Avg=19

BW=0.187499

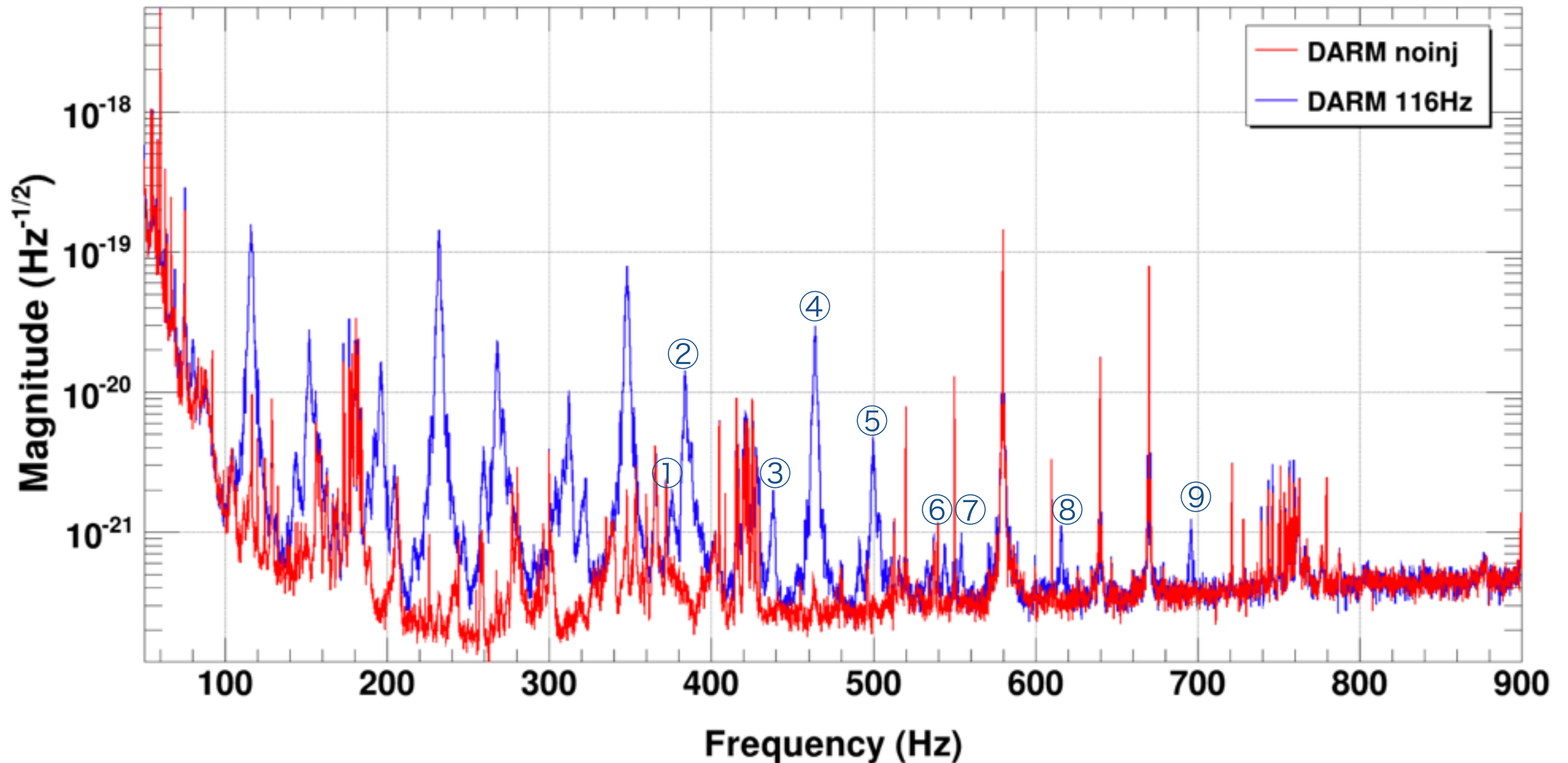
①116Hz ②144Hz ③152Hz (There are 156, 158Hz in noinj) ④188, 192, 196Hz

⑤204Hz (There are 206Hz in noinj) ⑥232Hz ⑦259.5, 268, 271, 275Hz ⑧312, 322Hz

⑨348Hz

Acoustic injection to REFL table

Power spectrum



*T0=11/06/2020 01:54:10

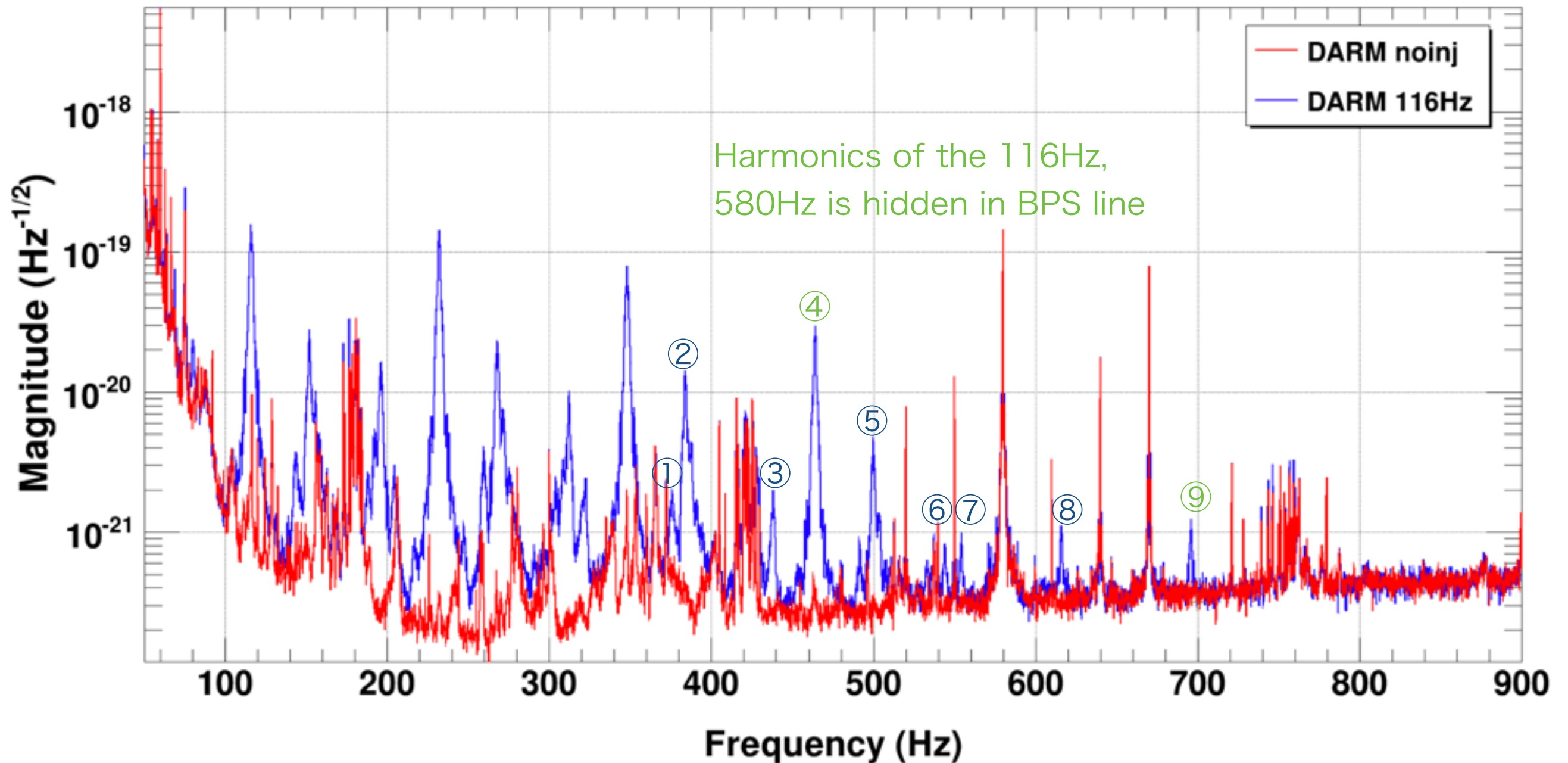
Avg=19

BW=0.187499

①376Hz ②384Hz ③438Hz ④464Hz ⑤491.5, 500, 503Hz ⑥544Hz ⑦554Hz
⑧616Hz ⑨696Hz

Acoustic injection to REFL table

Power spectrum



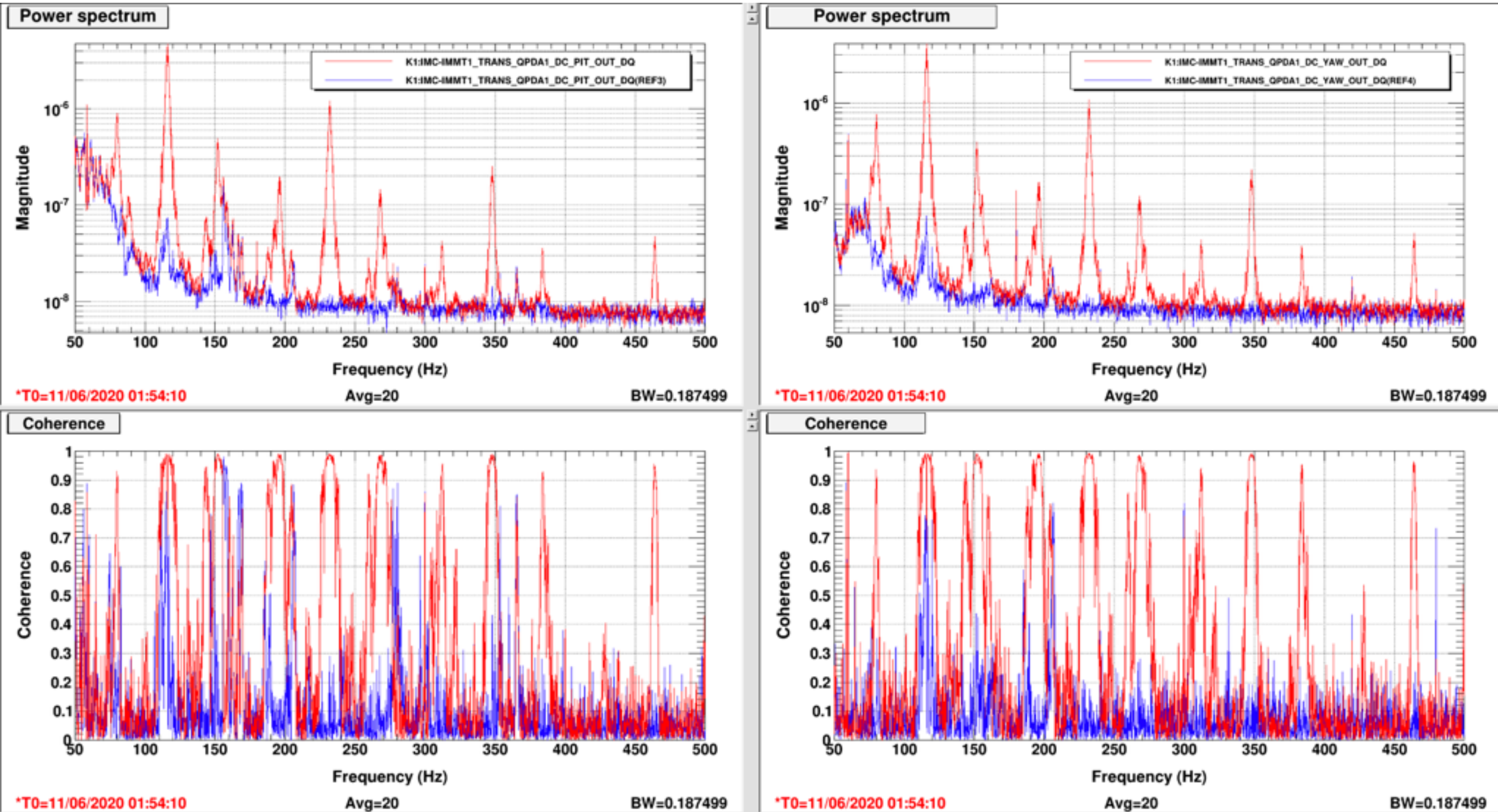
*T0=11/06/2020 01:54:10

Avg=19

BW=0.187499

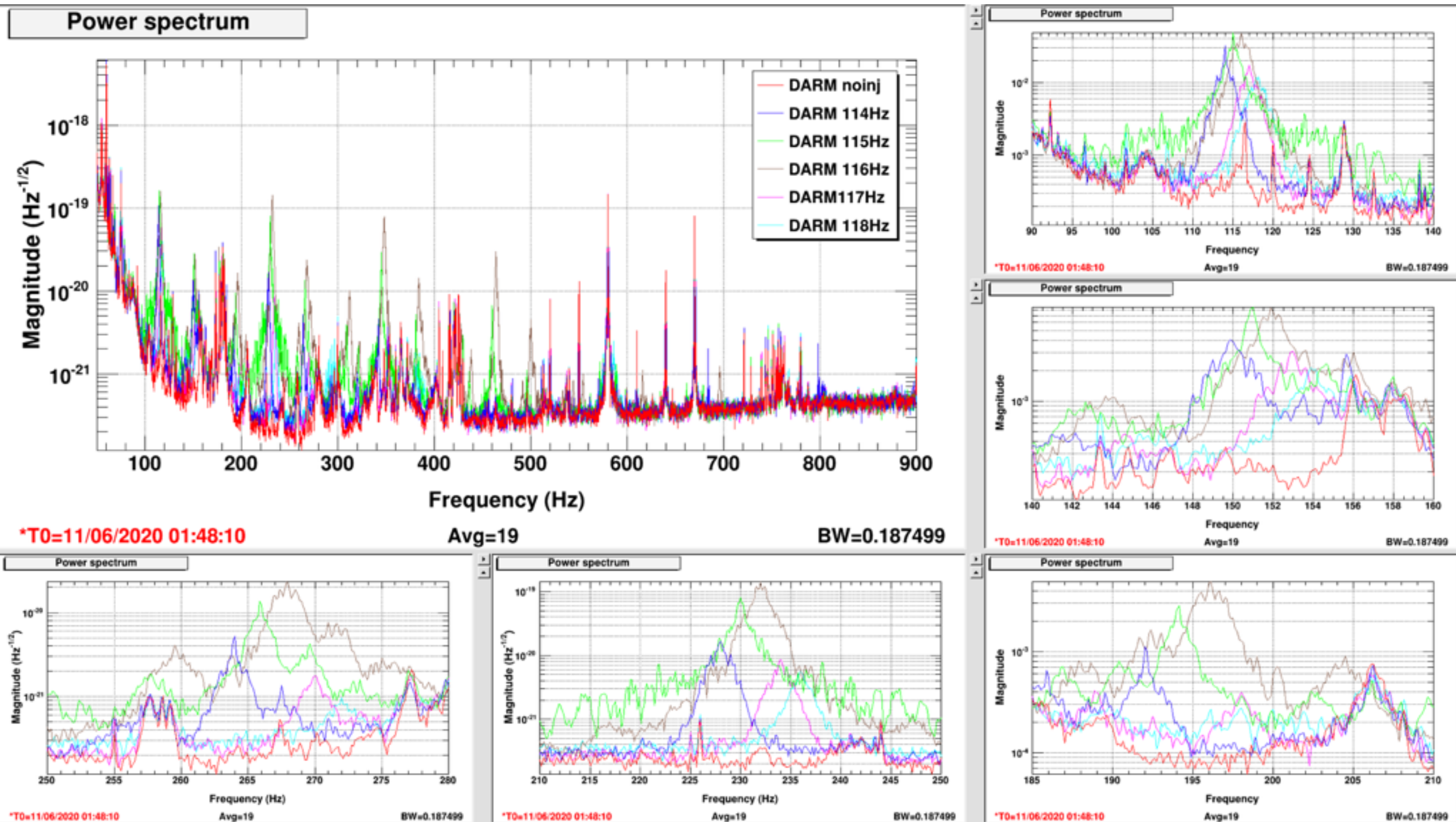
①376Hz ②384Hz ③438Hz ④464Hz ⑤491.5, 500, 503Hz ⑥544Hz ⑦554Hz
⑧616Hz ⑨696Hz

Acoustic injection to REFL table



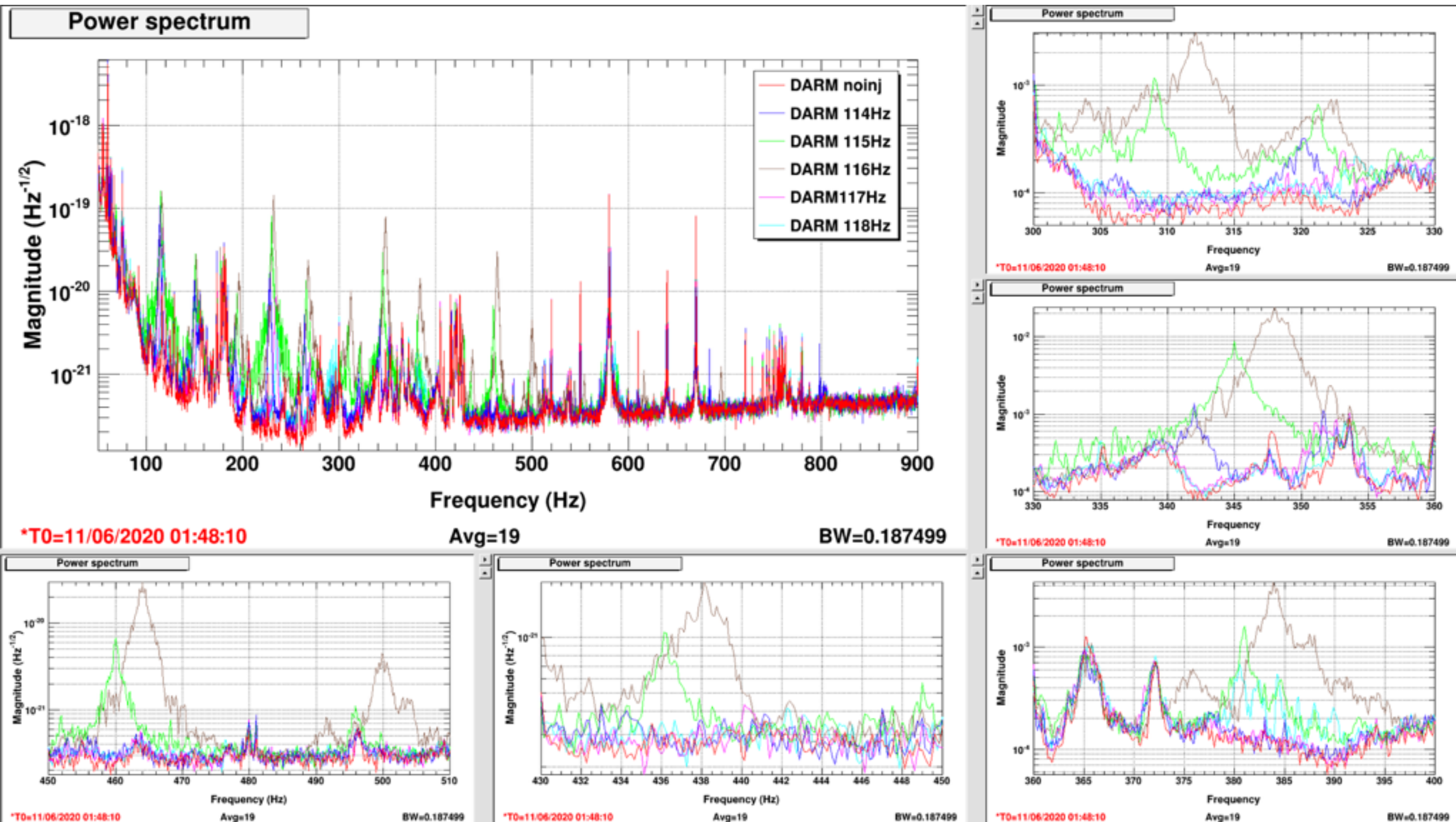
- We performed the acoustic injection to REFL table and PSL room

Acoustic injection to REFL table



- We performed the acoustic injection to REFL table and PSL room

Acoustic injection to REFL table



- We performed the acoustic injection to REFL table and PSL room

Homework this weekend

- Bruco analysis to 116Hz injection data
 - IMMT1 trans QPD P/Y have coherence
 - Check other PEM channels
 - Check suspension channels
- Frequency dependent analysis
 - Injection frequency dependence
 - Amplitude