

from the viewgraph at August f2f

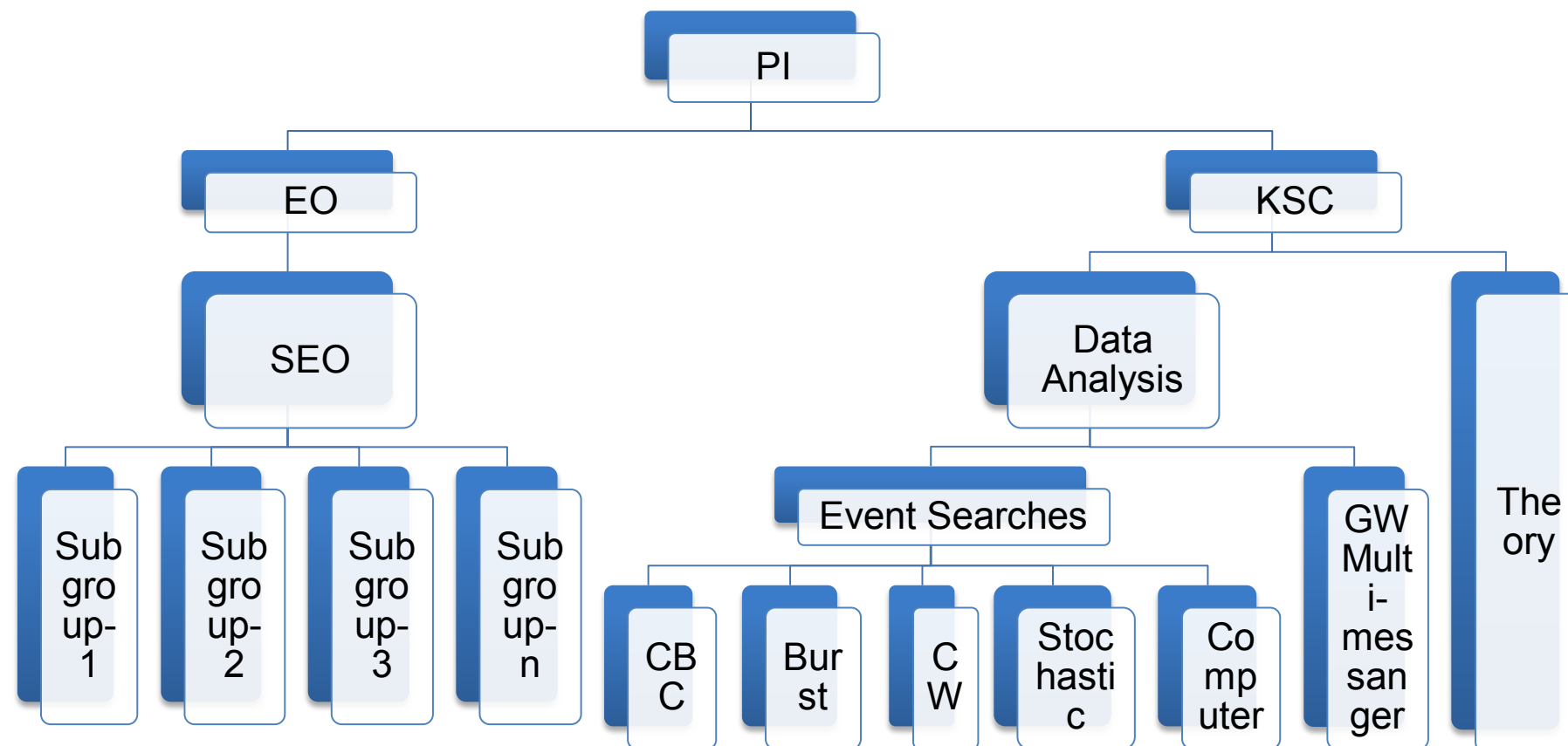
Organization Structure

Is the structure acceptable for KSC ?

PI's viewgraph at 25th morning :

Image of the future Organization Chart

- ✓ KSC (KAGRA Scientific Congress) has been established. It is time for us to think about the future organization (in the observation era) chart including KSC.
- ✓ In addition, considering the future observation era, we propose to include "GW Multi-messenger".



Where the CPC should be located
in the KAGRA organization ?

KSC discussion item@F2F 2016 Winter
KSC Board

Proposal from the KSC board

Propose/Request the following to EO:

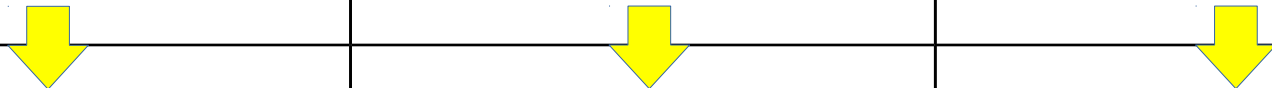
Please make the CPC a part of the KSC

Our rationale

1. The authorship policy and the author list are already maintained by the KSC. The publication rule is closely related to the authorship policy. Therefore, it is natural that the CPC becomes a part of the KSC.
2. The publication policy is discussed and decided by KSC (with an approval by EO). It is then natural that KSC also takes the responsibility to execute the rules. The CPC is a service to the KAGRA community and it fits the purpose of KSC.

Administration of scientific output

Policy Making	Collaborator Policy (Who can be a collaborator ?)	Authorship Policy (Who can be an author ?)	Publication Policy (Procedure to publish results)
Execution	Maintenance of the collaborator list	Maintenance of the author list	Publication control




Administration of scientific output

 administered by KSC

Current Status

Policy Making	Collaborator Policy (Who can be a collaborator ?)	Authorship Policy (Who can be an author ?)	Publication Policy (Procedure to publish results)
Execution	Maintenance of the collaborator list	Maintenance of the author list	Publication control



This part is an exception now



Administration of scientific output

 administered by KSC

Our request

Policy Making	Collaborator Policy (Who can be a collaborator ?)	Authorship Policy (Who can be an author ?)	Publication Policy (Procedure to publish results)
Execution	Maintenance of the collaborator list	Maintenance of the author list	Publication control

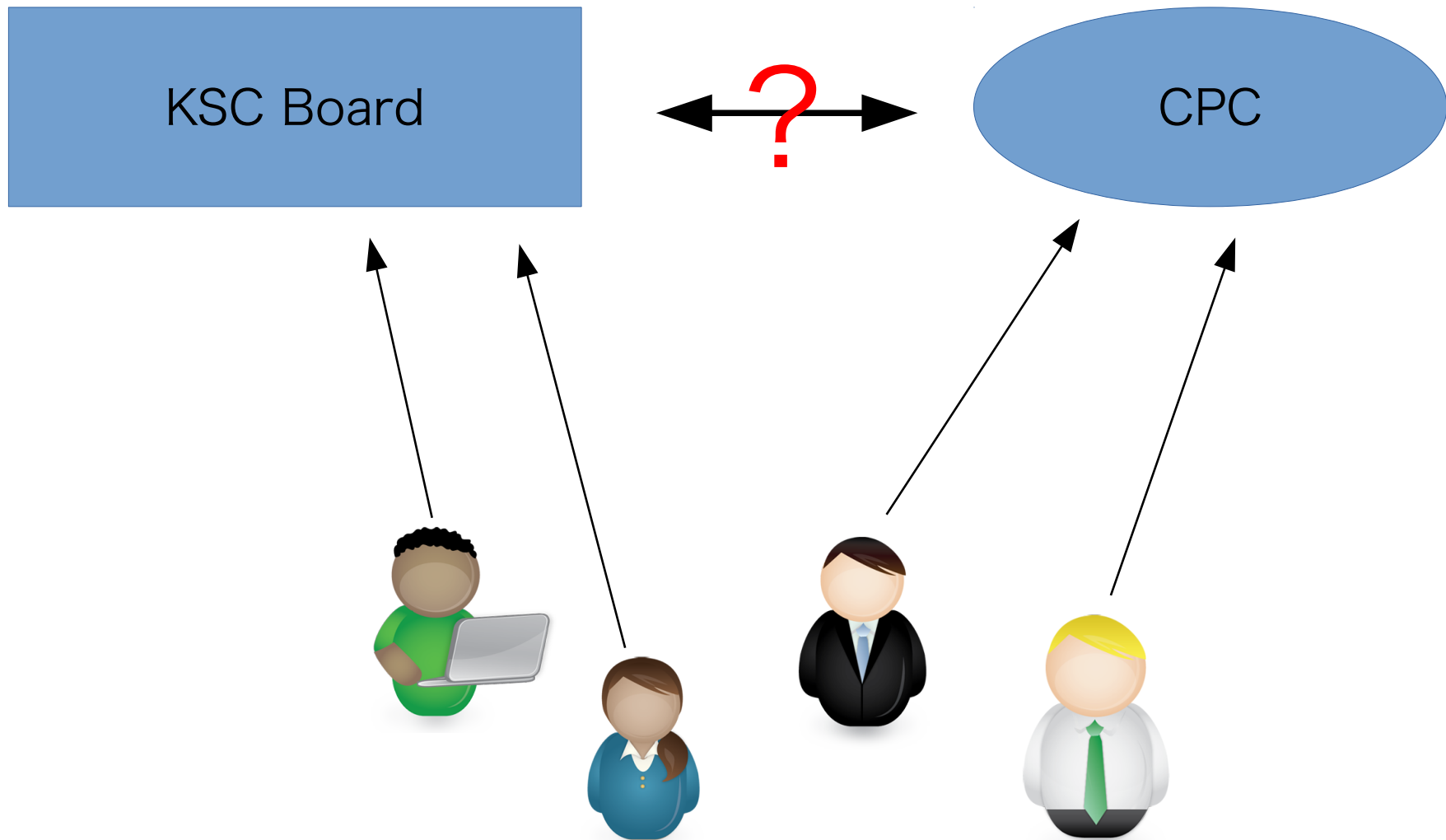
This is more natural

Making the report line clearer

There is no perfect rule.
People will have complaints.

: Where should they talk to ?

When the CPC is outside of the KSC



Making the report line clearer

If the CPC is a part of the KSC

When people raise issues to the CPC, there is an unambiguous report line from the CPC to the KSC board, so that the KSC board can organize the discussion.

