

Virgo Log

(Mar. 3 - Apr. 7, 2015)

April 7th, 2015
DetChar Meeting
Takahiro Yamamoto

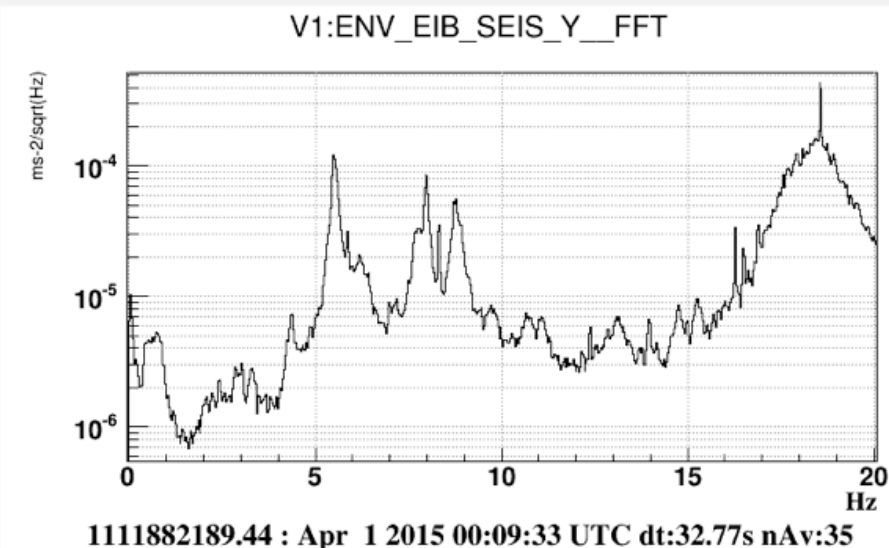
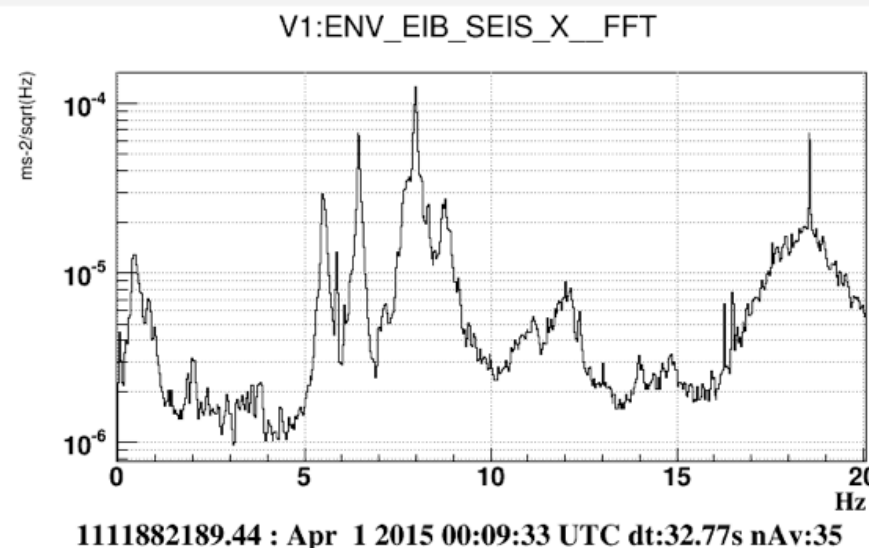
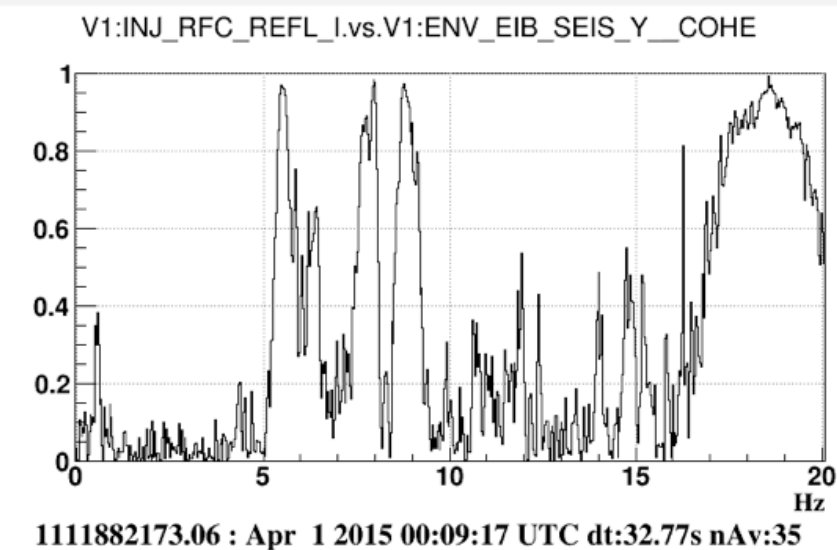
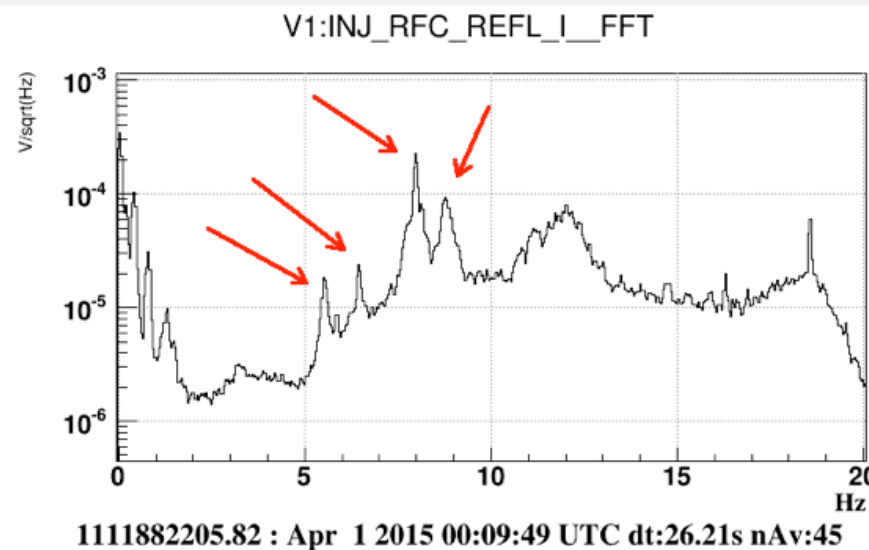
□ characterization of some RFC REFL I spectral lines(32260)

- data set : 3/29-30, 3/30-31, 3/31-4/1
- lines list : generated by FFT (df = 10mHz)
- channel : INJ_RFC_REFL_I (coherence with another channel)

mechanical modes of EIB
(5.5, 6.4, 7.7, 8.8 Hz)

EIB :
External Injection Bench

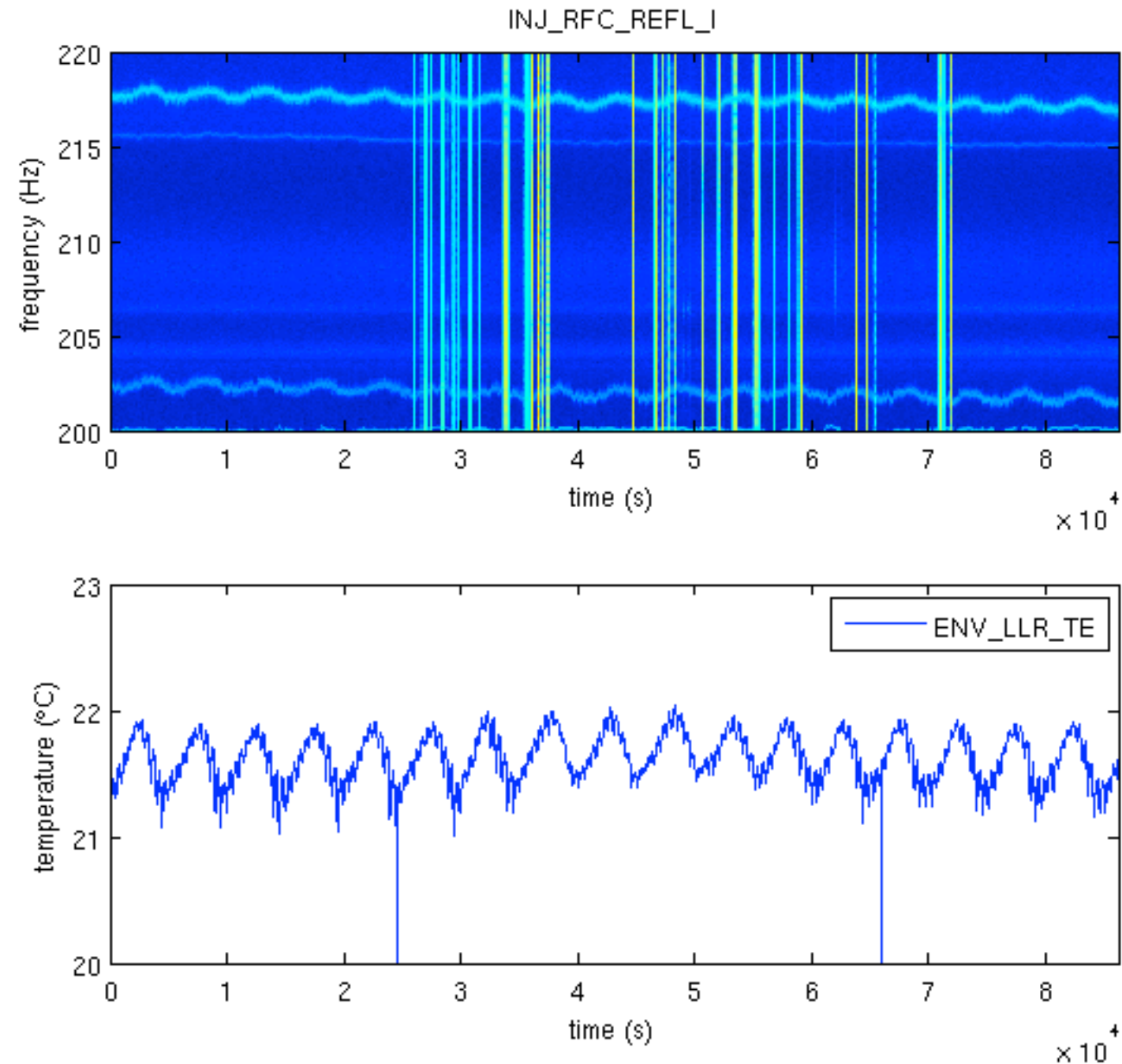
dataDisplay v9r12p19 : started by virgorun on Apr 2 2015 12:23:58 UTC



□ characterization of some RFC REFL I spectral lines(32260)

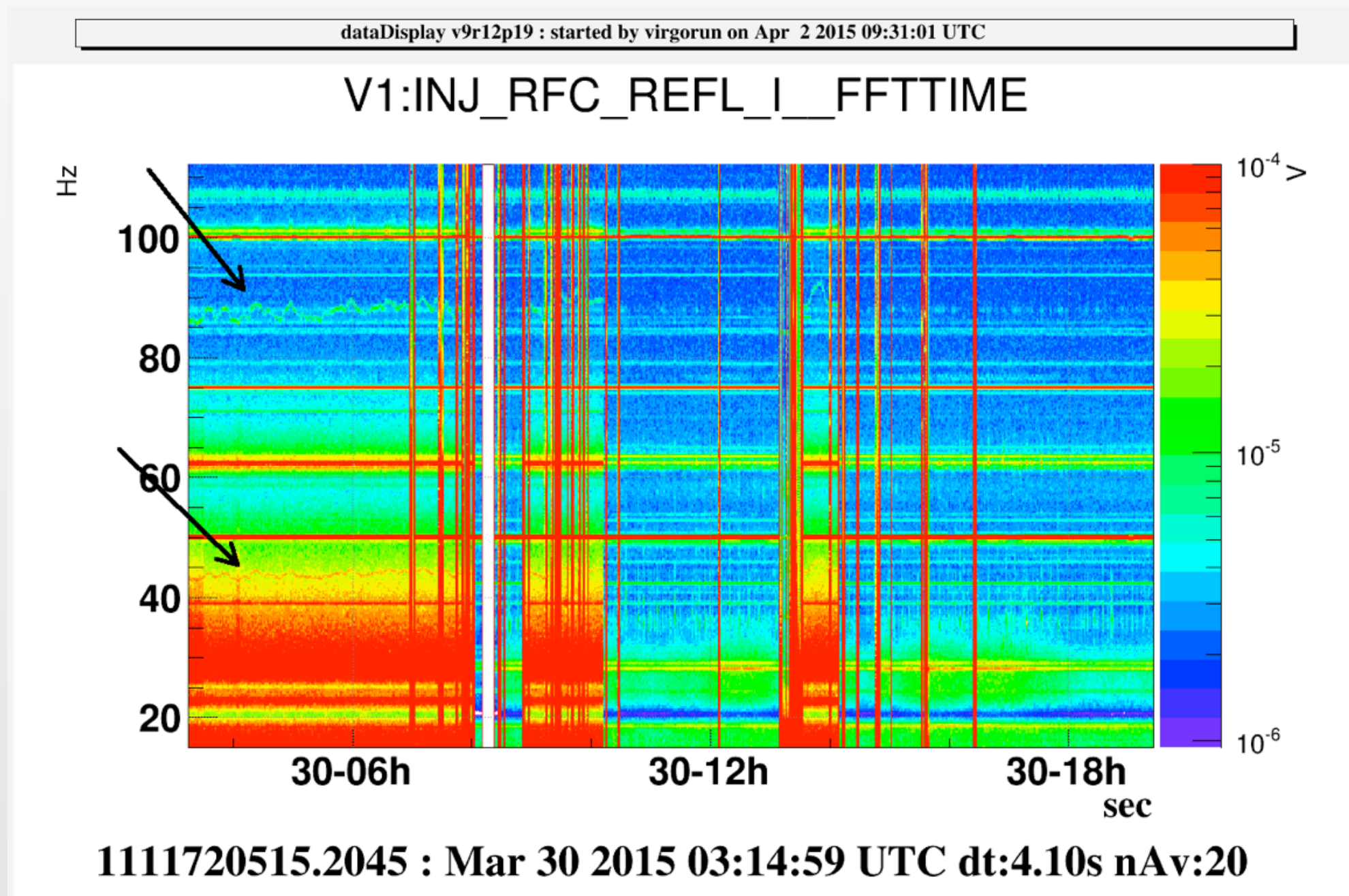
Modulation of acoustic lines in LL corresponds to temperature of LL room.

Acoustic lines are generated by the cooling fan of the laser driver box (in past work)

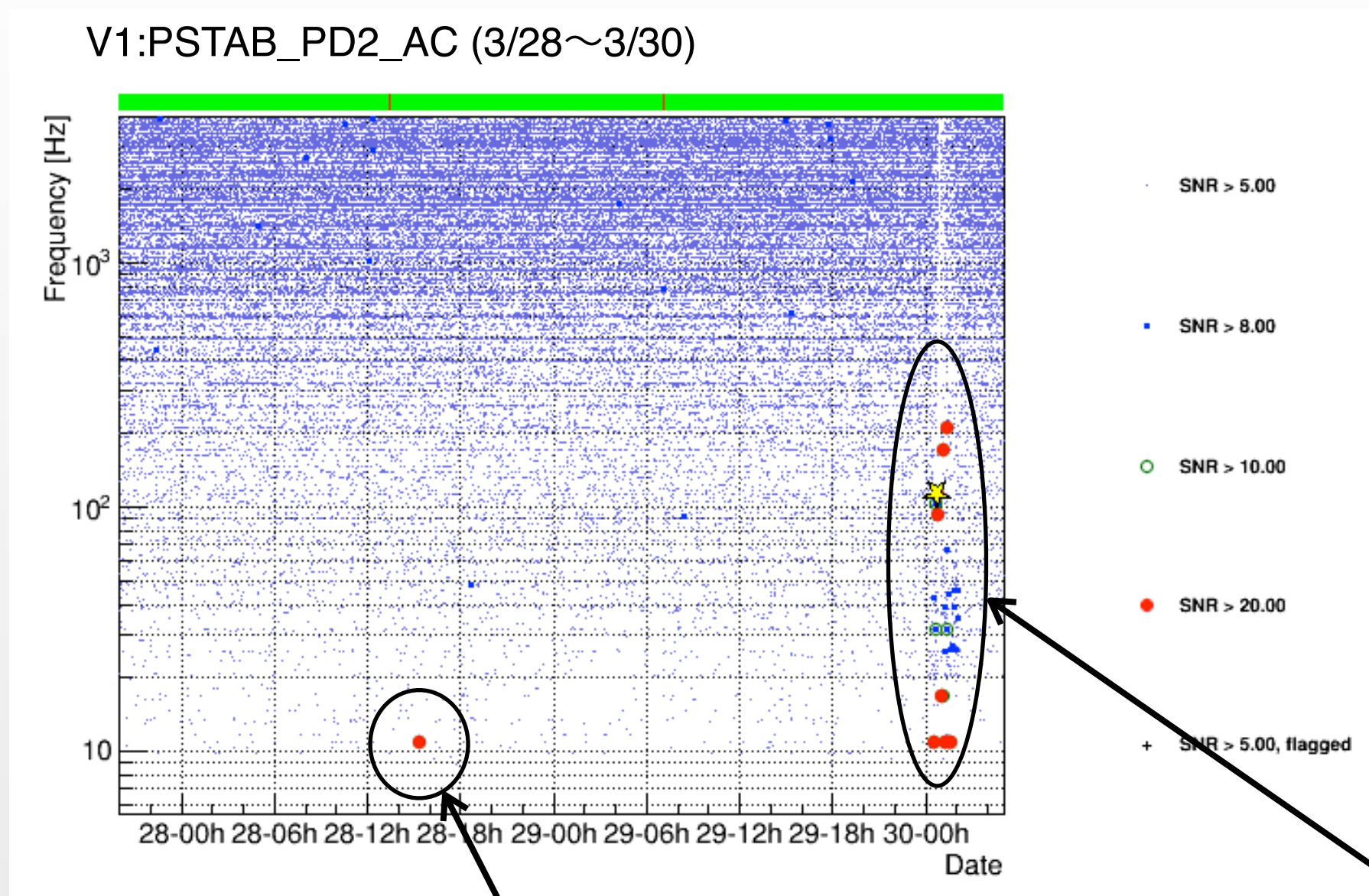


□ characterization of some RFC REFL I spectral lines(32260)

driffting lines appeared only when AA is in drift mode



□ Detchar glitch shift report (32264)

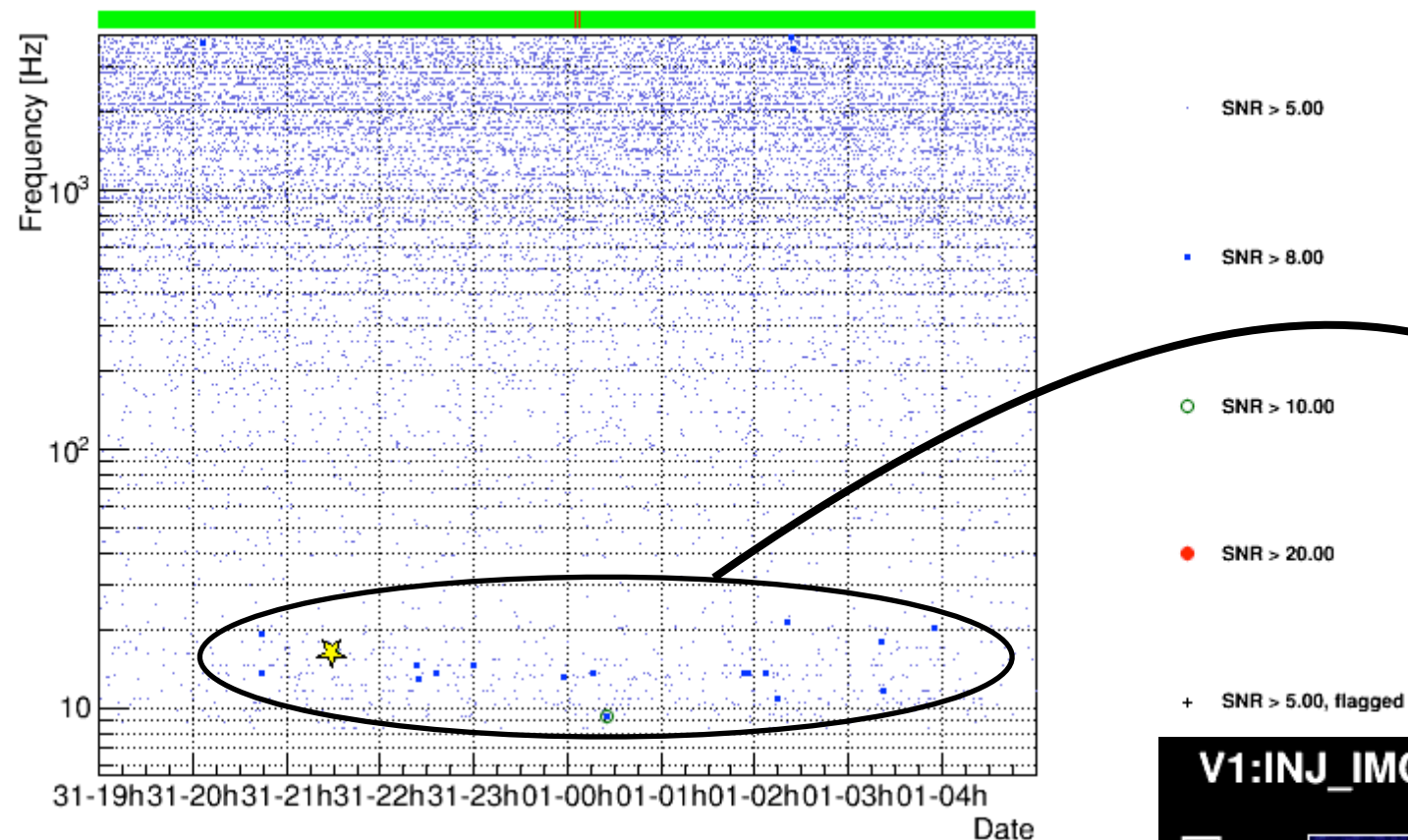


earthquake in New Guinea
(detected in seismic sensor)

sudden change in a correction signal sent to the PMC

□ Detchar glitch shift report (32264)

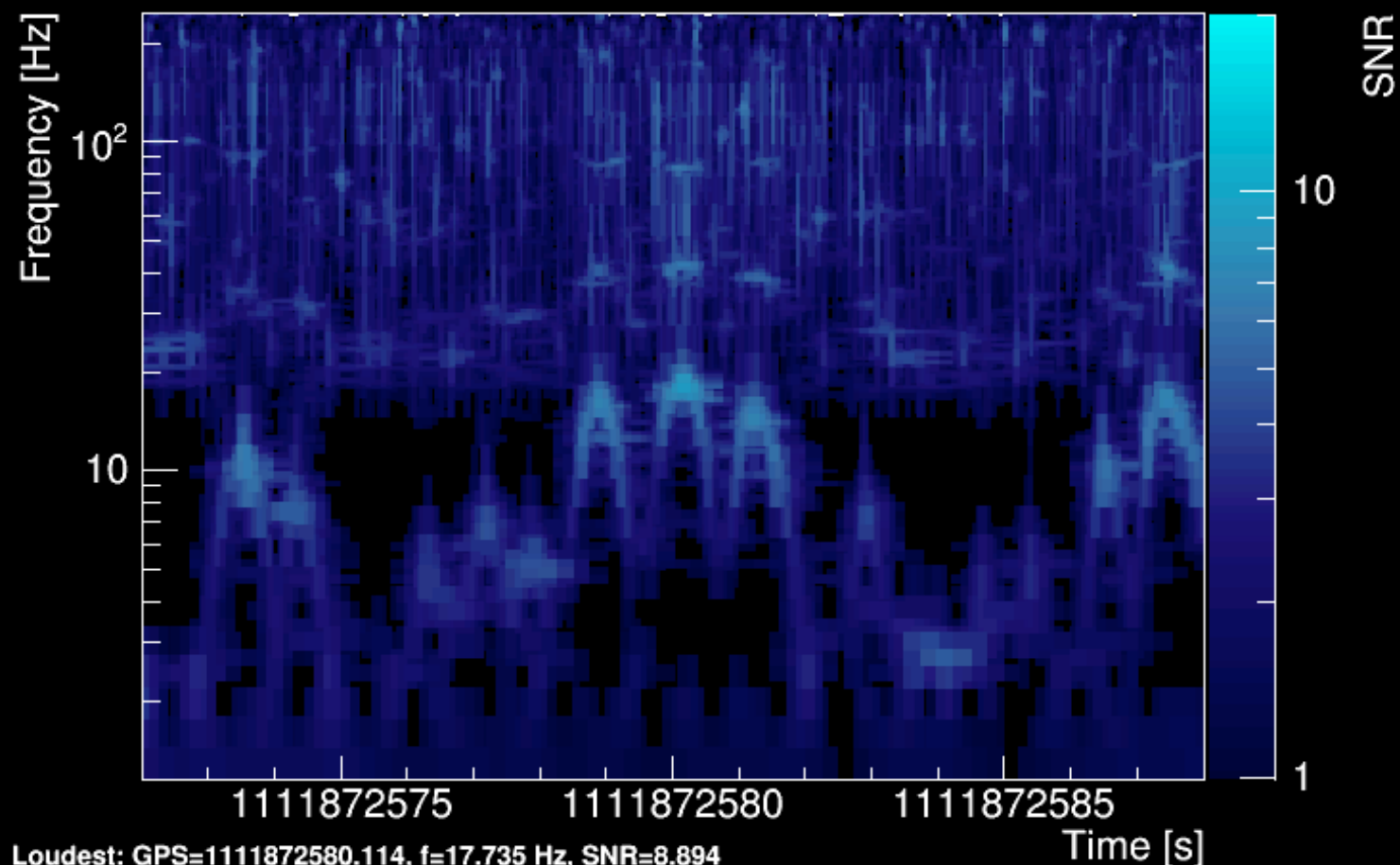
V1:PSTAB_PD2_AC (3/31~4/1)



These glitches are associated to some scattered light in the IMC

These arches related the velocity of the scatterer. (in past work)

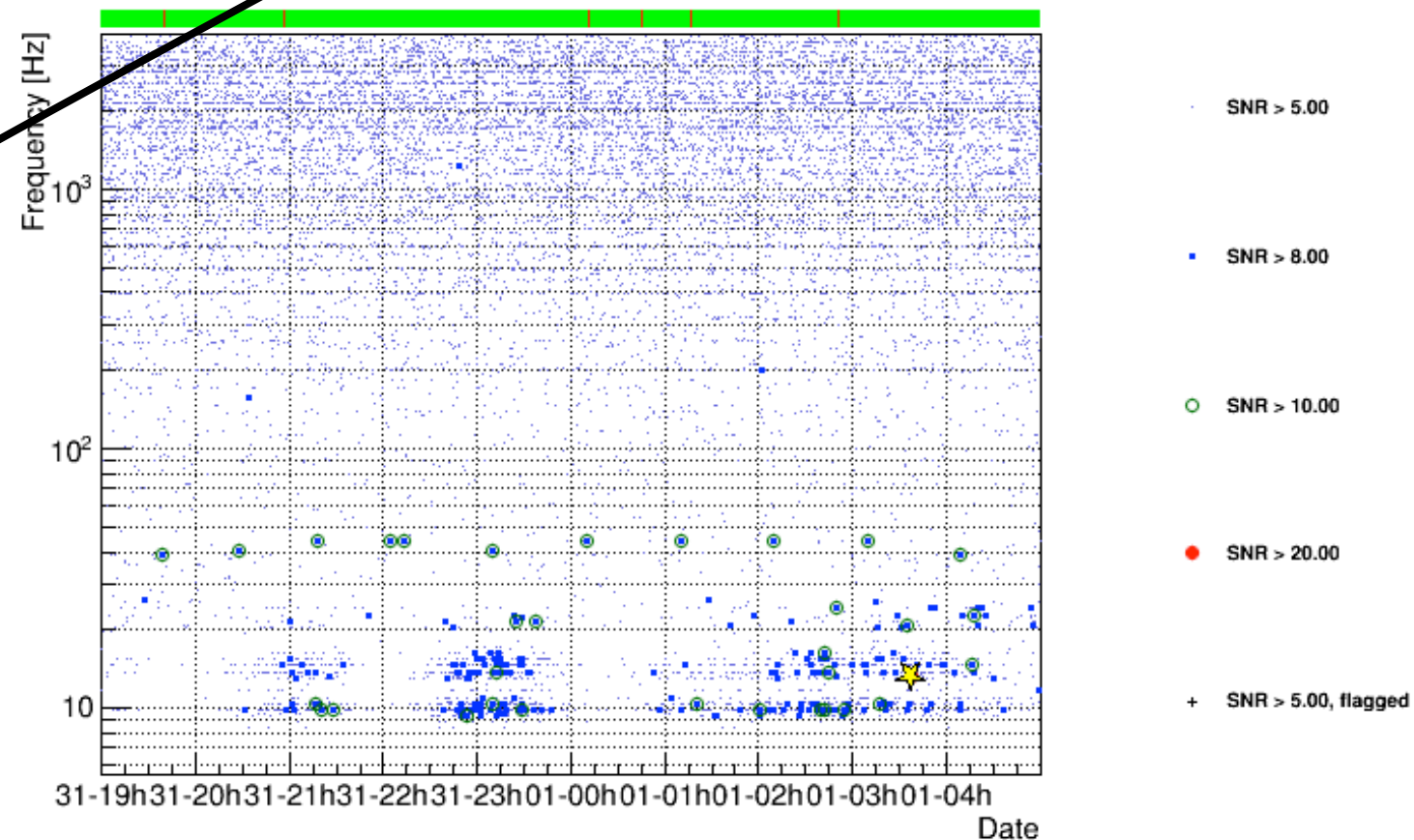
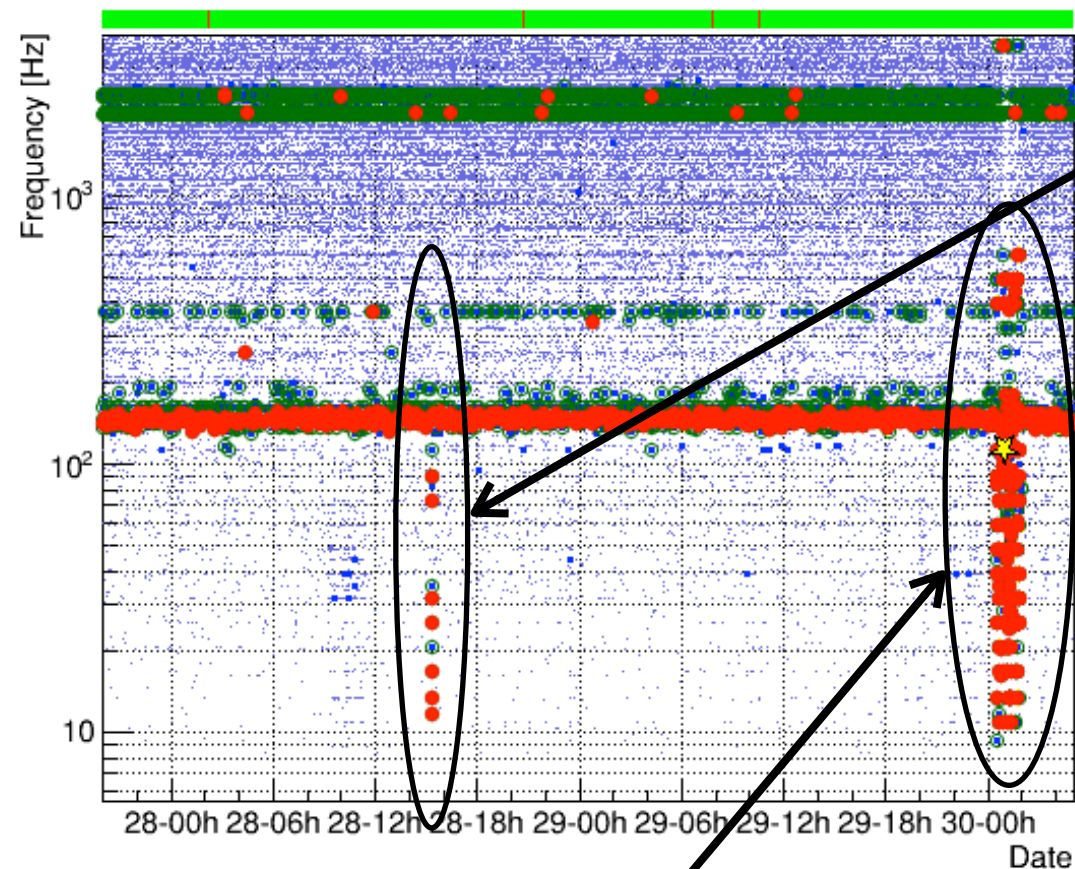
V1:INJ_IMC_END_QD_DC



□ Detchar glitch shift report (32264)

V1:INJ_RFC_REFL_I
(3/28~3/30, 3/31~4/1)

sudden change in a correction signal sent to the PMC

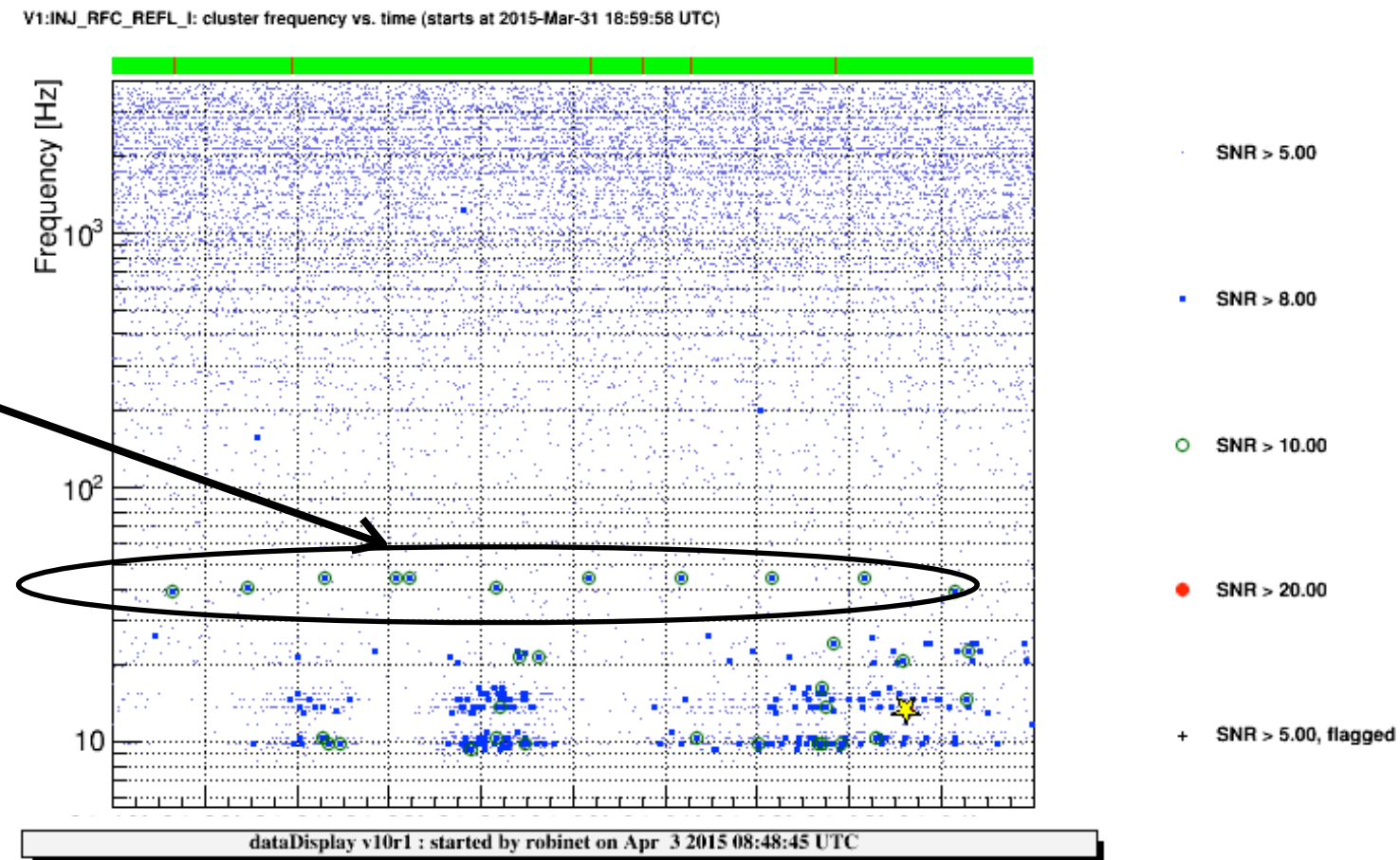


earthquake in New Guinea

All the line disappeared after SIB1 rotator workstation was switched off
(SIB : Suspended Injection Bench)

□ Detchar glitch shift report (32264)

These glitches are periodic
(every hour)



These glitches detected
by many magnetic/UPS/IPS sensor

UPS : Uninterruptible Power Supply

IPS : ?

