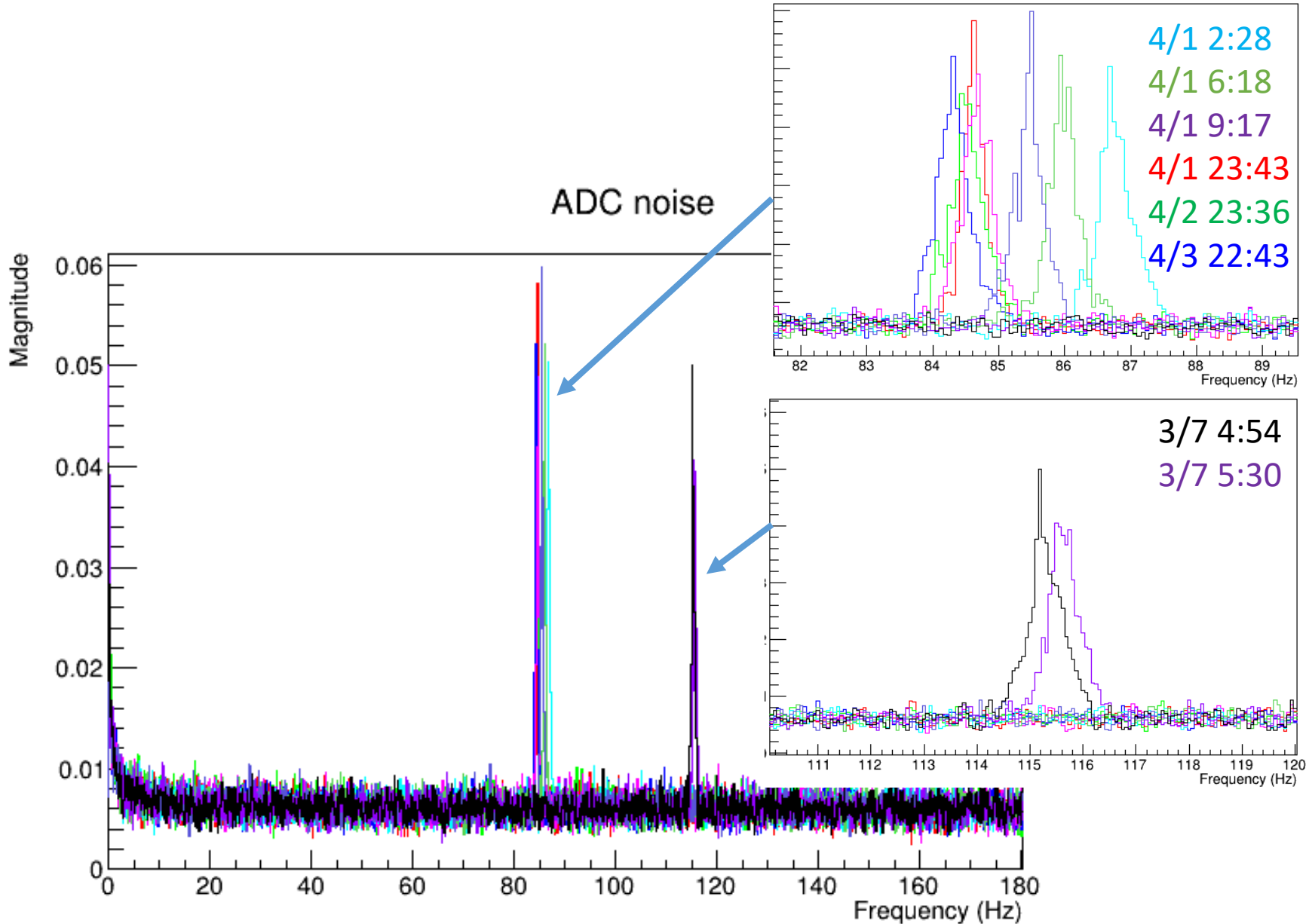


Status Report

2019/4/9

NAOJ, Tatsuki Washimi

ADC noise monitoring @ X-end



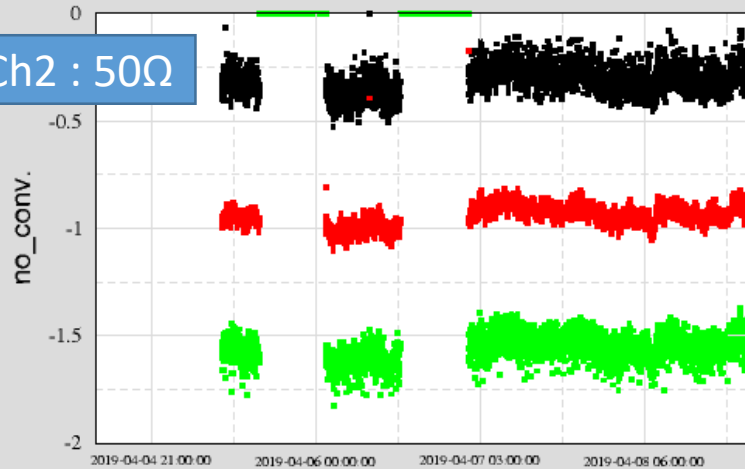
ADC noise monitoring @ X-end

Data taking in KAGRA DQ system (4/5 17:30~)

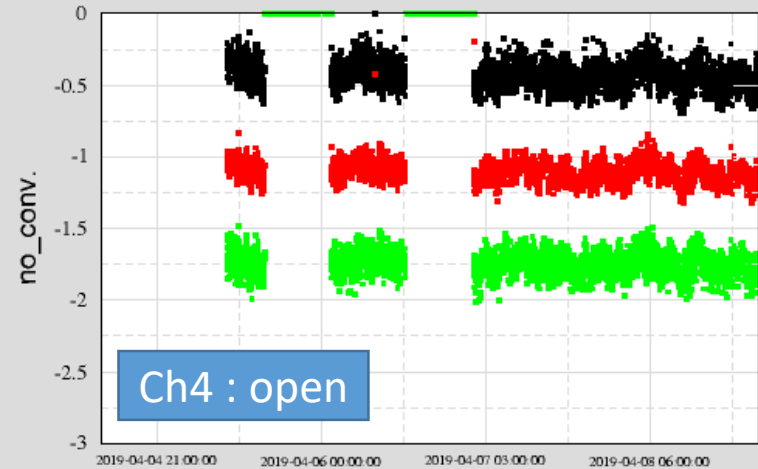


Trend from 19-04-05-08-30-44 to 19-04-08-23-44-44

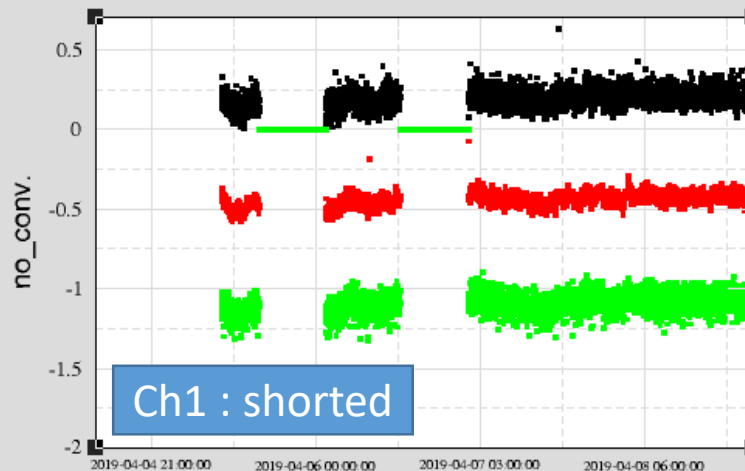
Ch 2: K1:PEM-SENSOR_EXA_RACK_EX0_1_IN1_DQ



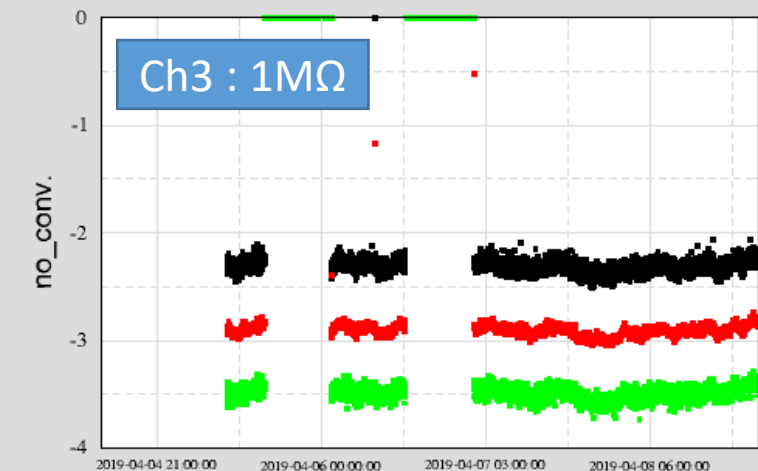
Ch 4: K1:PEM-SENSOR_EXA_RACK_EX0_3_IN1_DQ



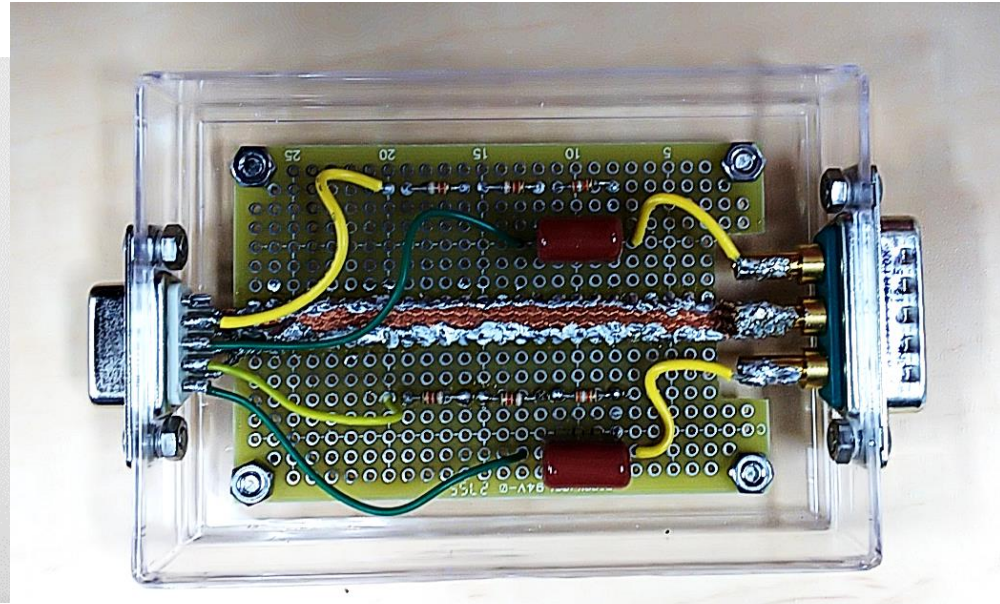
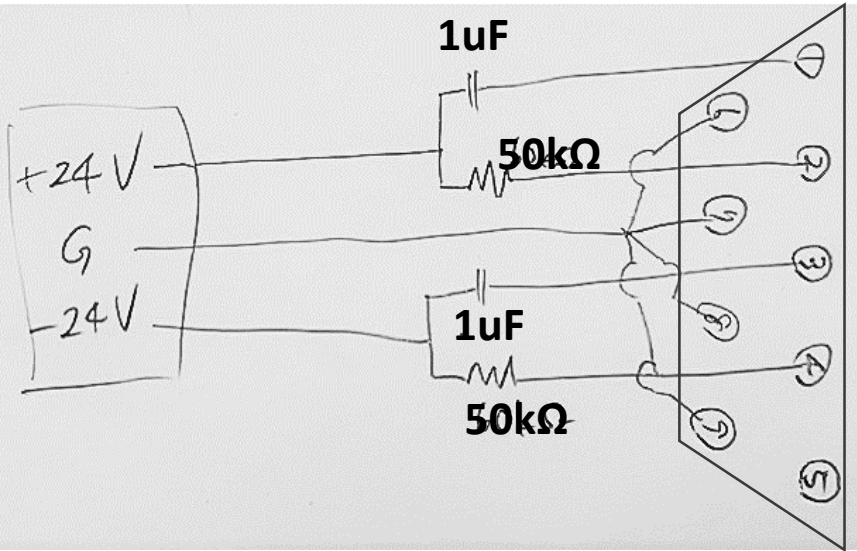
Ch 1: K1:PEM-SENSOR_EXA_RACK_EX0_0_IN1_DQ



Ch 3: K1:PEM-SENSOR_EXA_RACK_EX0_2_IN1_DQ



18V/24V DC power monitor



Resistance between each pins in AA chassis is $20\text{k}\Omega$

- Ch1 : Glitch noise monitor for +18V / +24V
- Ch2 : Stability monitor of DC voltage for +18V / +24V ($\rightarrow \times 1/4$)
- Ch3 : Glitch noise monitor for -18V / -24V
- Ch4 : Stability monitor of DC voltage for -18V / -24V ($\rightarrow \times 1/4$)

100V AC power monitor

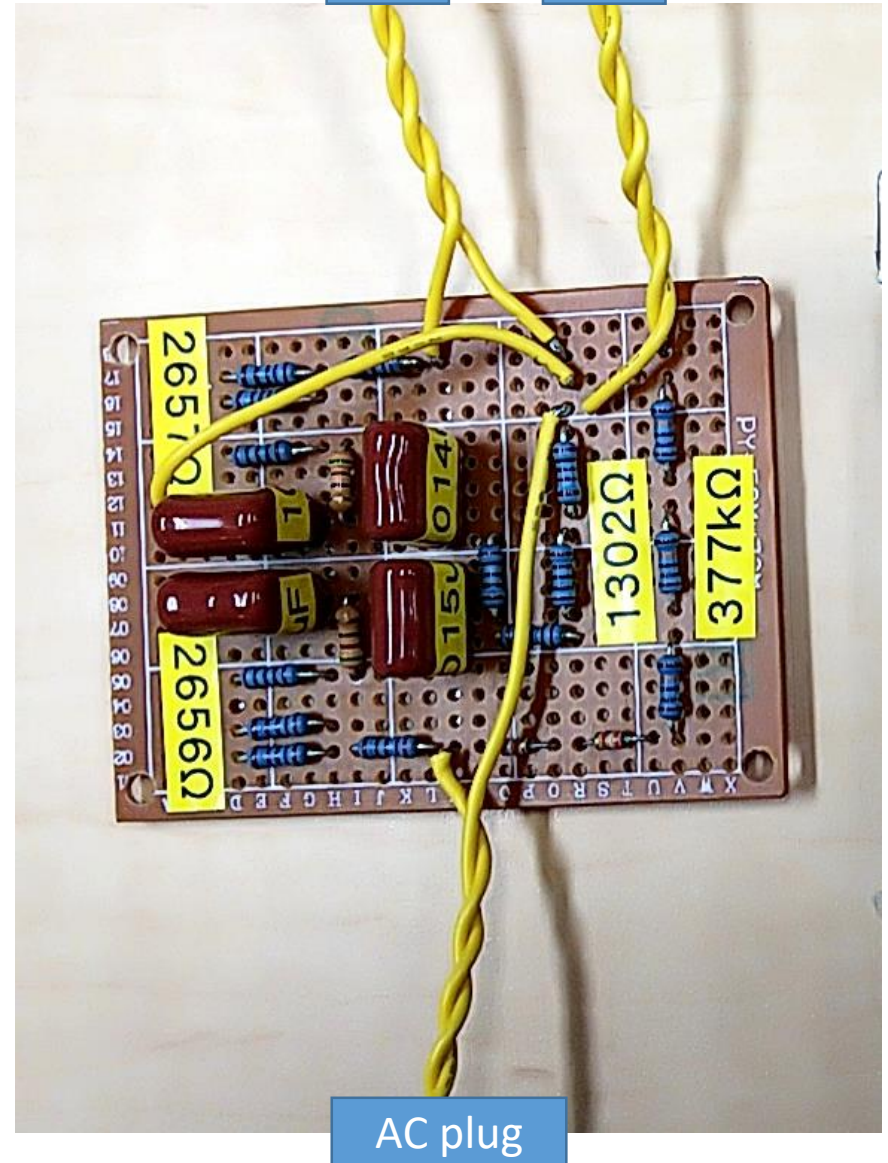
Ch1

Ch2

Notch filter for 60Hz

- $C = 1 \mu\text{F}$
- $R = 2.65\text{k}\Omega$


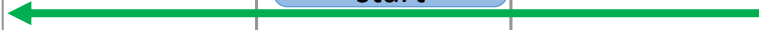

- Ch1 : Glitch noise monitor
 - from 141V to $< 1\text{V}$ @ 60Hz
- Ch2 : Stability monitor
 - from 141V to 7V
- Ch3 : Ground monitor
- Ch4 : ADC noise monitor (10k Ω)



3 日 月 火 水 木 金 土
 2019 3 4 5 6 7 8 9
 10 11 12 13 14 15 16
 17 18 19 20 21 22 23
 24 25 26 27 28 29 30
 31

2019 4月

5 日 月 火 水 木 金 土
 2019 5 6 7 8 9 10 11
 12 13 14 15 16 17 18
 19 20 21 22 23 24 25
 26 27 28 29 30 31

日	月	火	水	木	金	土	
31	1	2	3	4	5	6	
		 Make the DC/AC monitoring circuits					
7	8	9 today DC monitor Install @X	10	11	12 AC monitor Install @X	13	
14	15	16	17 NAOJ @Mitaka	18	EXC cooling start	20	
		 F2F & Satellite Meeting @ Kashiwa					
21	22	23	24	25	26	27	
							
28	29 昭和の日	30 退位の日	1 即位の日	2 国民の休日	3 憲法記念日	4 みどりの日	