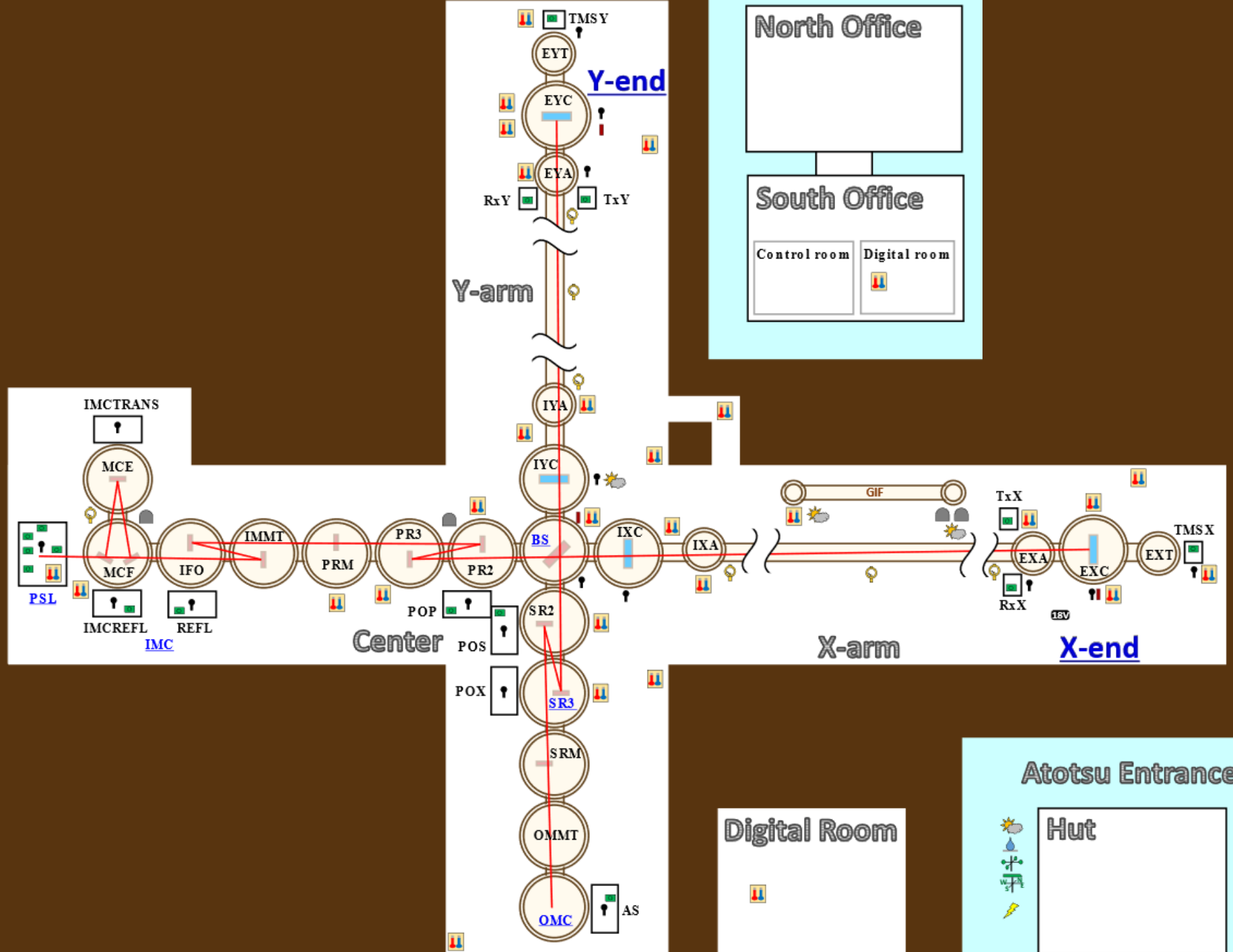




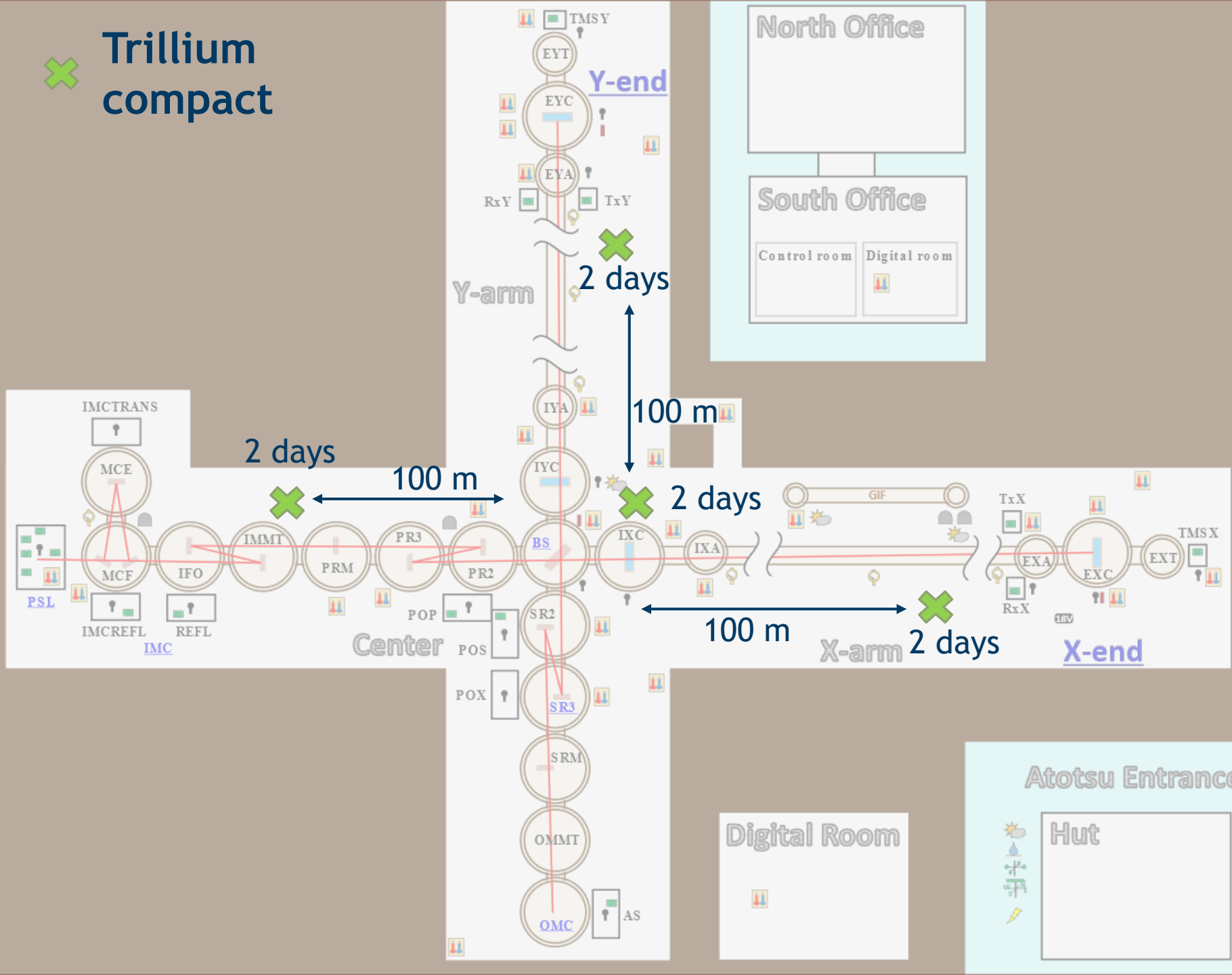
Measurements at KAGRA

Francesca Badracco, GSSI
November 26th



Aim:
characterization
of the seismic
field in the
central cavern

✕ Trillium compact



Aim:
characterization
of the seismic
field in the
central cavern



What do we want to check?



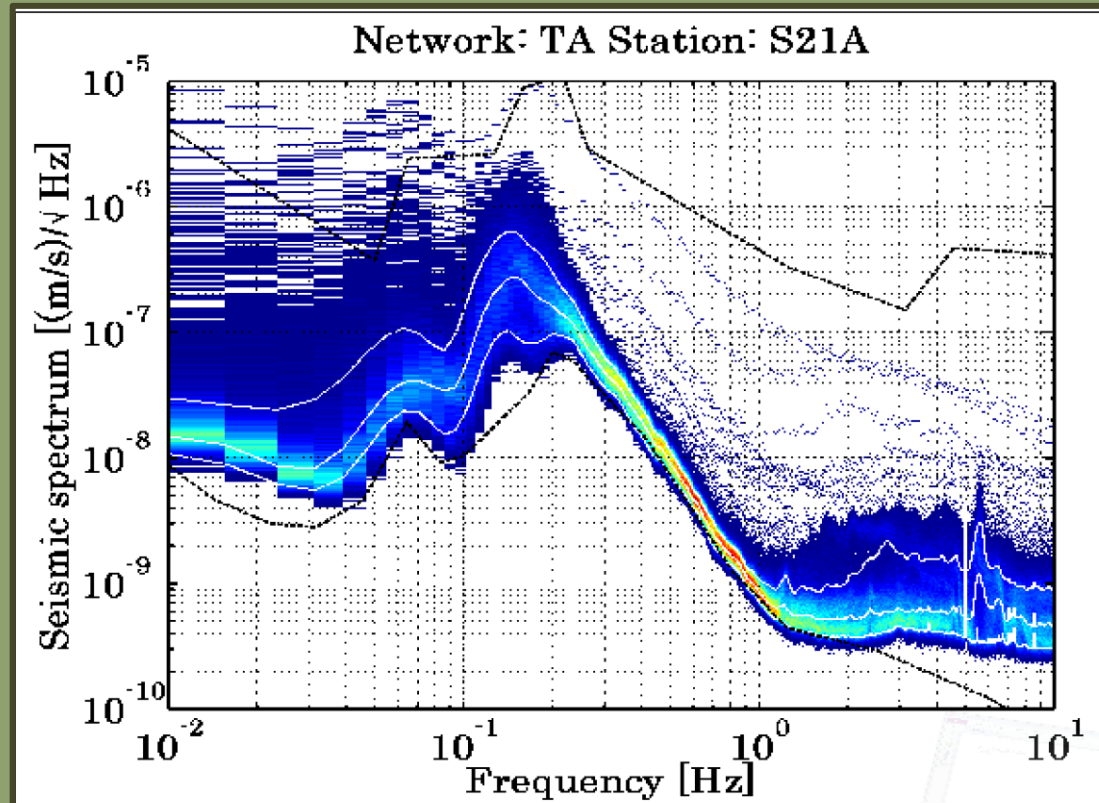
What do we want to check?

Variation in time

We don't expect so much variation underground

Variations in space

Possible sources of noise

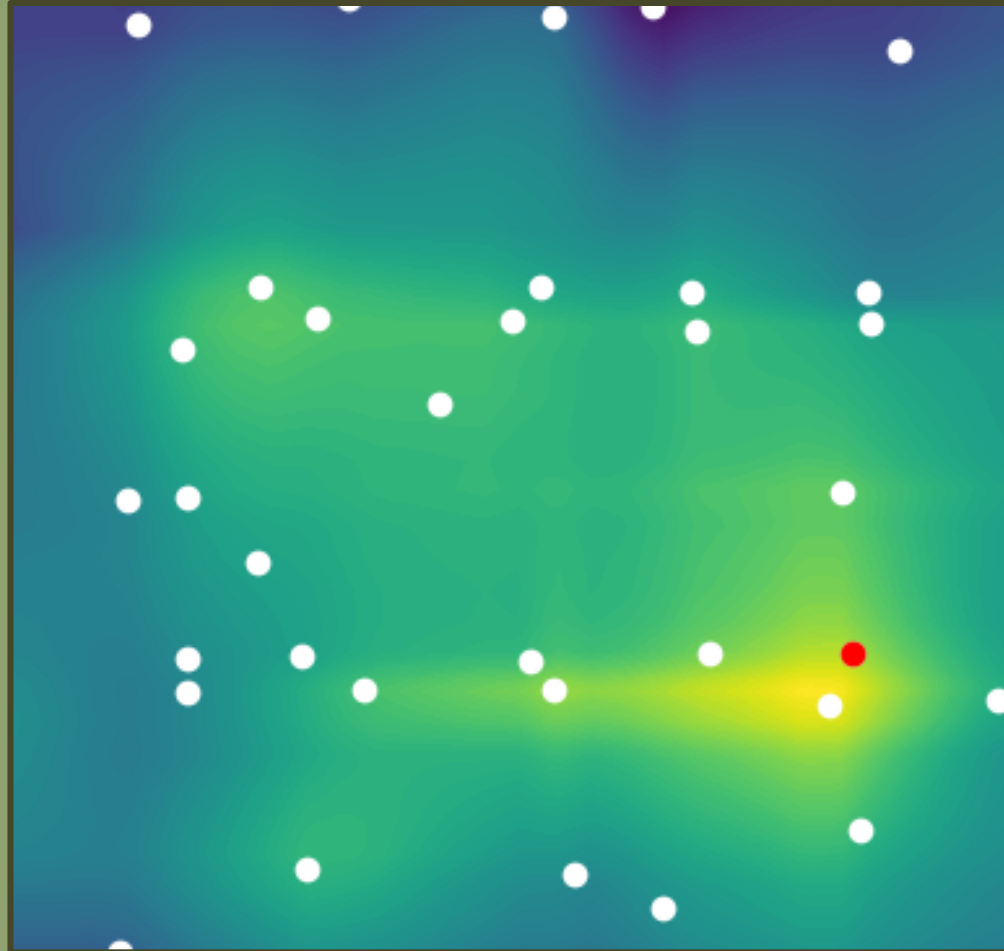




What do we want to check?

Space correlations:

They can give some hints on the velocity of the seismic waves

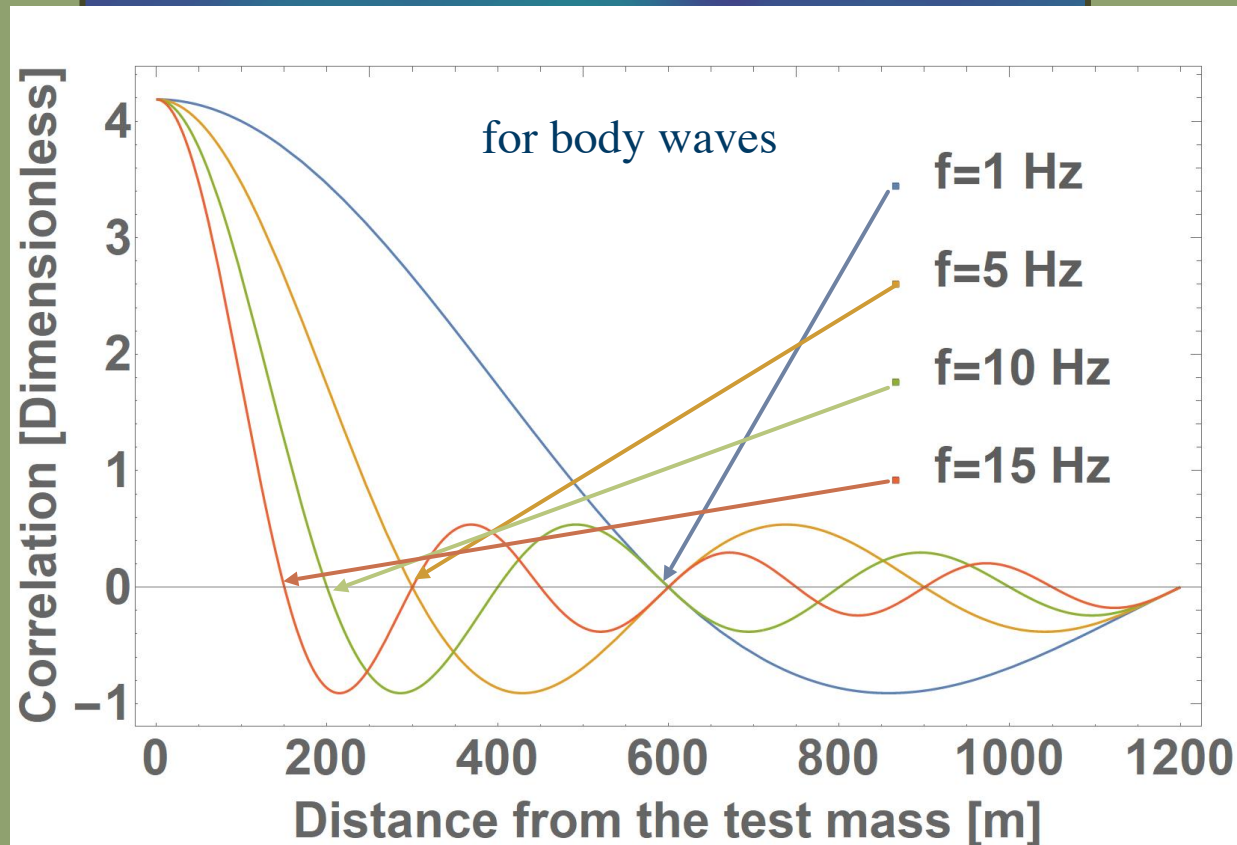




What do we want to check?

Space correlations:

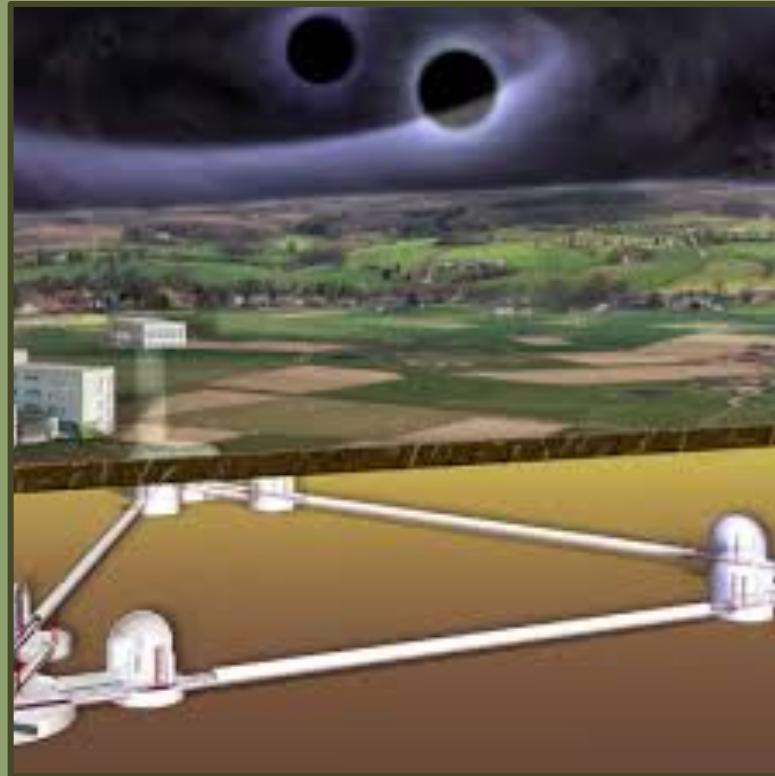
They can give some hints on the velocity of the seismic waves



Bigger space in between the sensors \rightarrow more info on lower frequencies



What do we want to check?



Testing ground for ET

We assume that **underground** we will **reduce** the seismic noise (and so also the Newtonian noise)

But we don't precisely know what the impact is of local sources (pumps, infrastructure...) on the **seismic field**