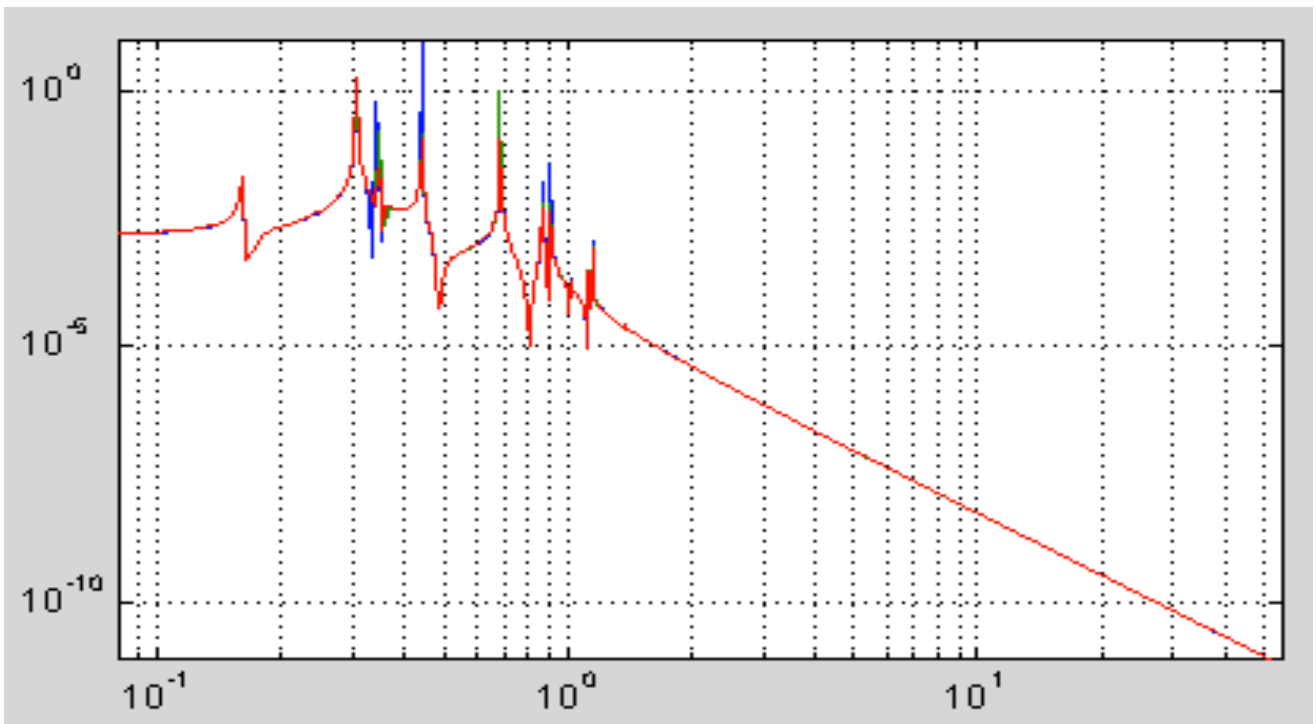
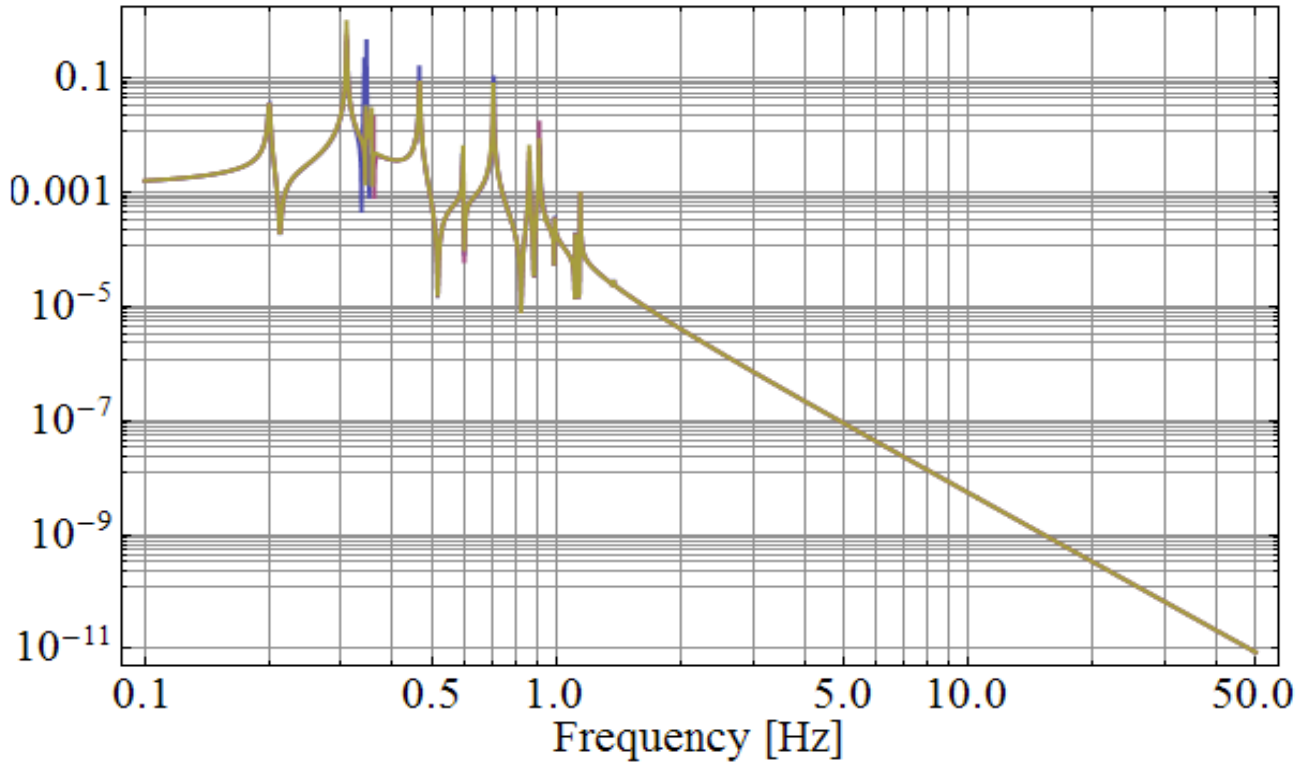


Check of TS 110512 PAY TFs

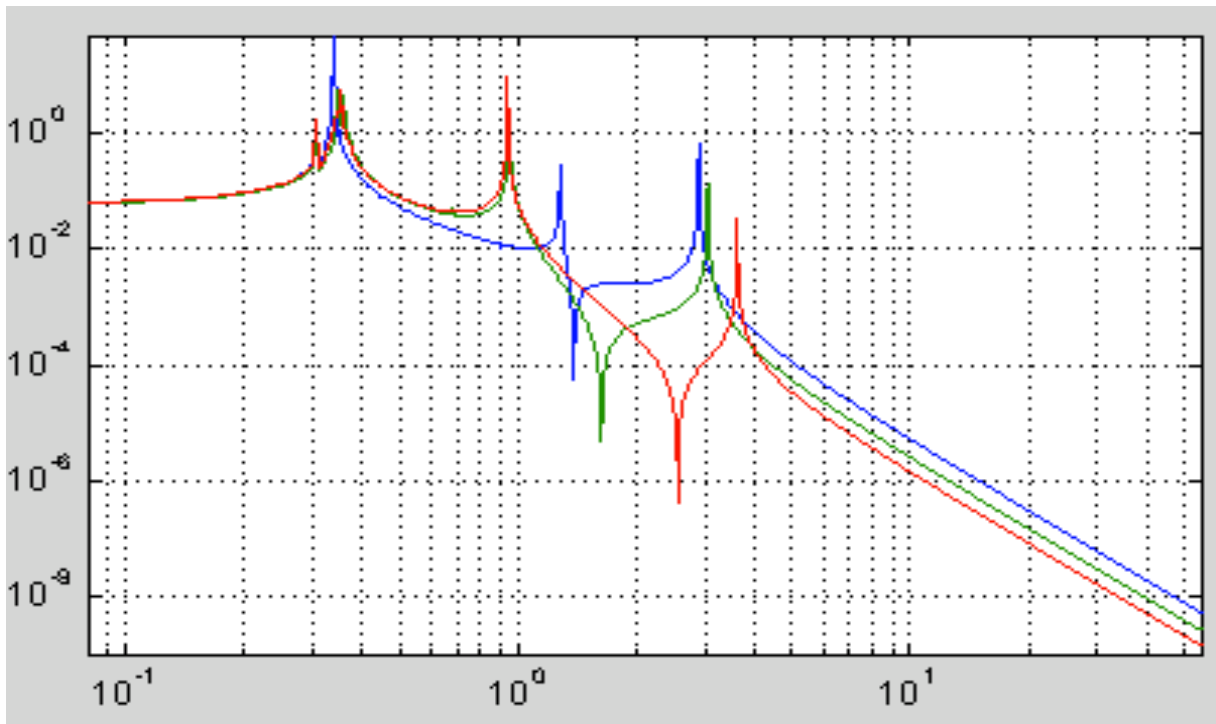
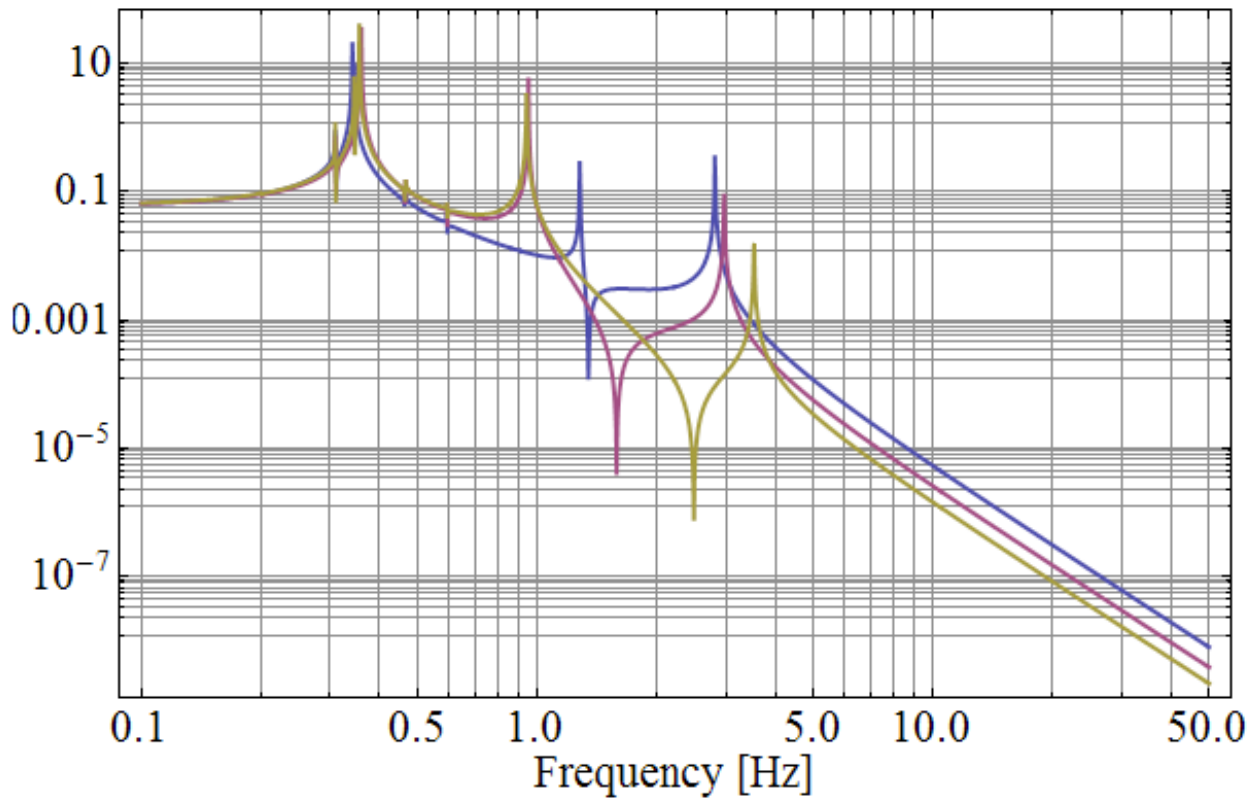
- Action IMR>IM, ReadOut TM, no IP here.
- Blue = 10 kg, green = 40 kg, red = 80 kg, all params detail identical

longitudinal



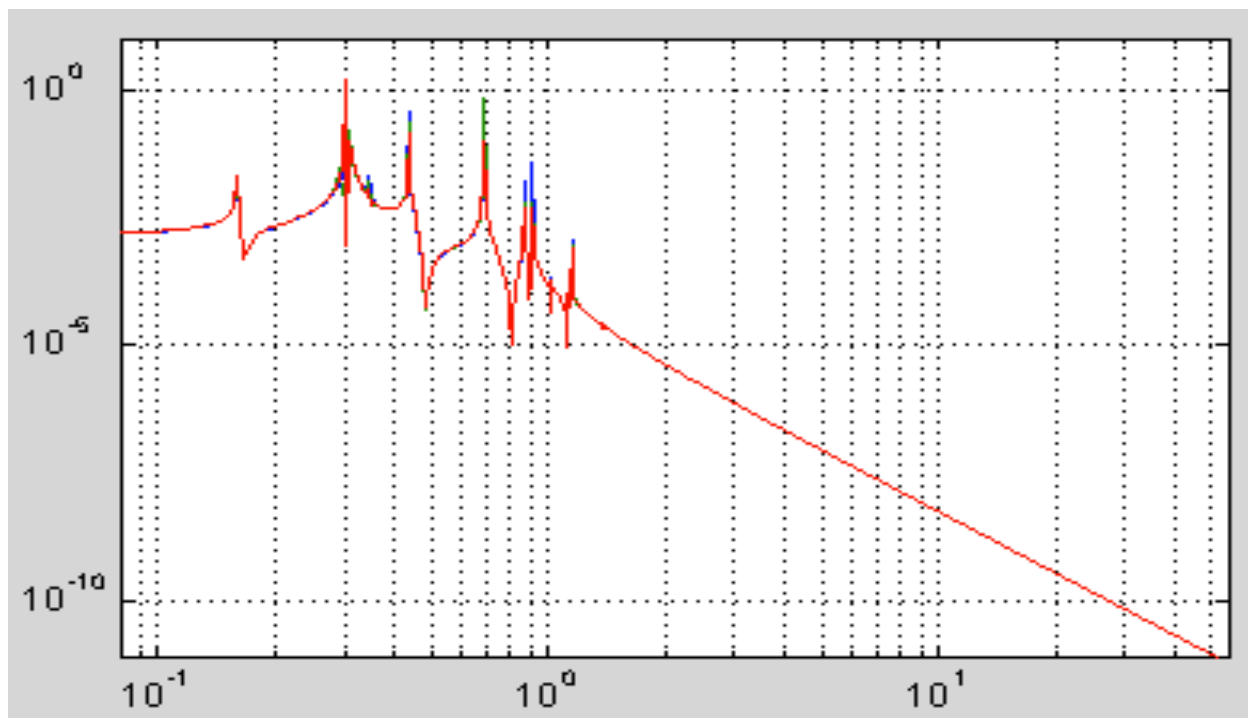
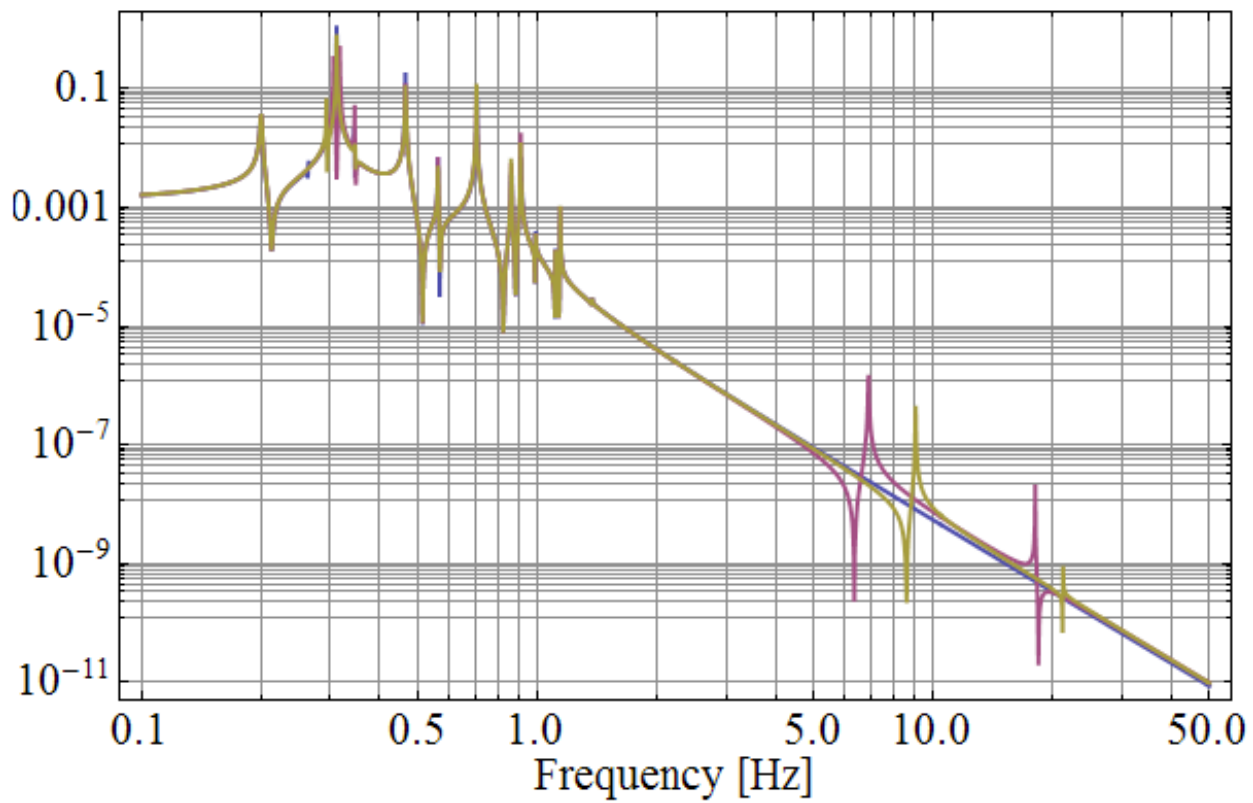
~ OK: we have to check the reason of 0.6 Hz pair, a similar pair is also in transversal (0.57 Hz)

pitch



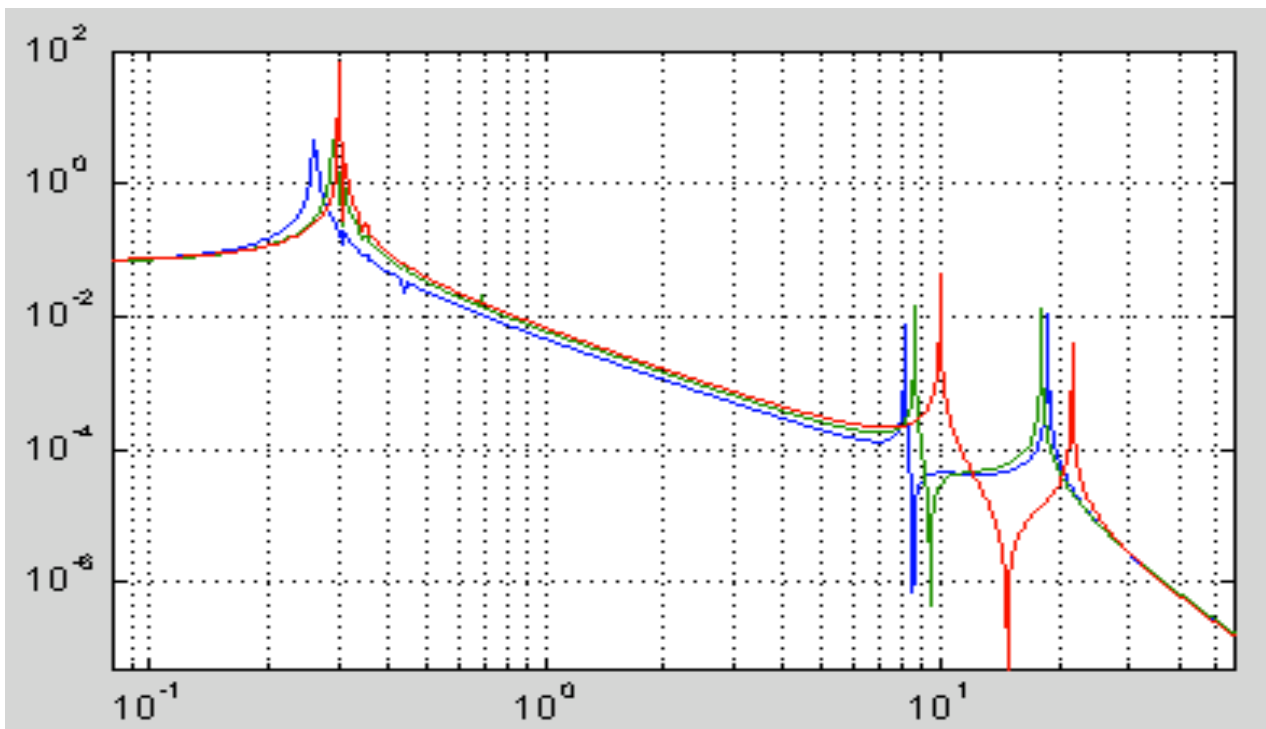
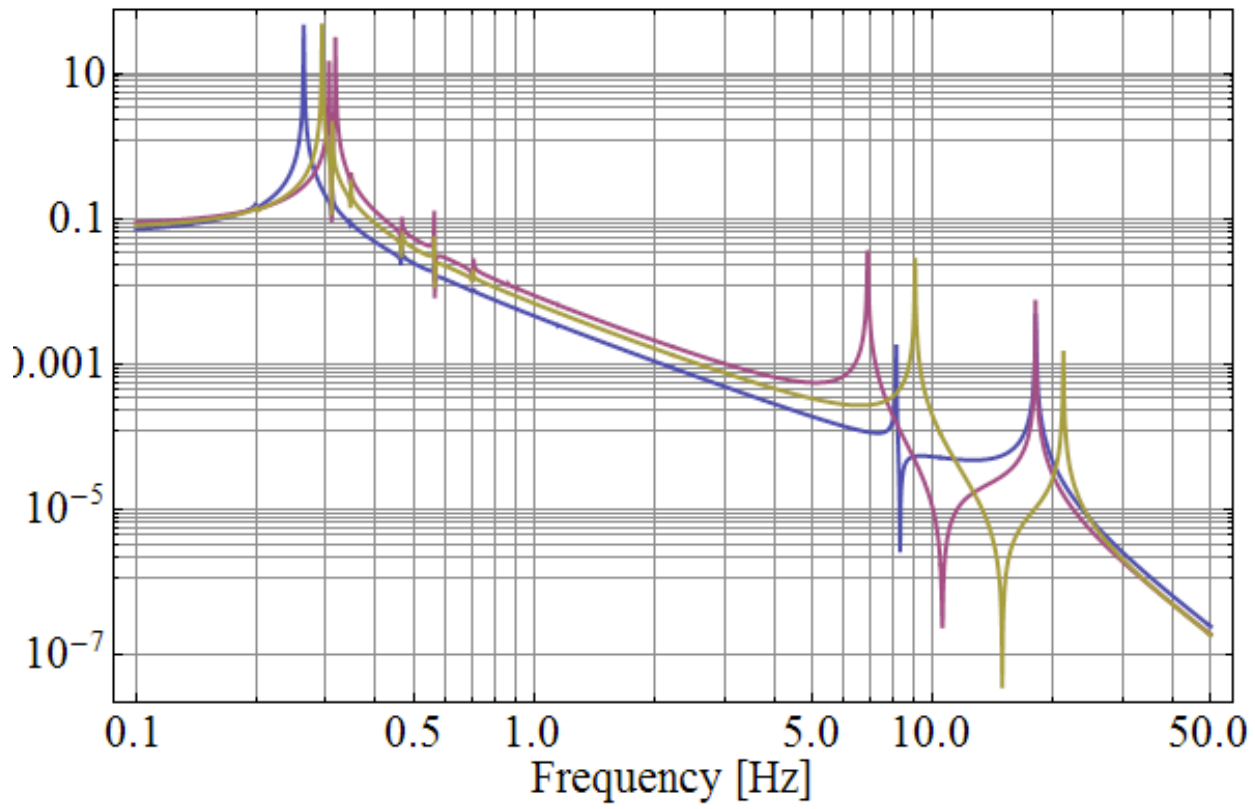
OK

transversal

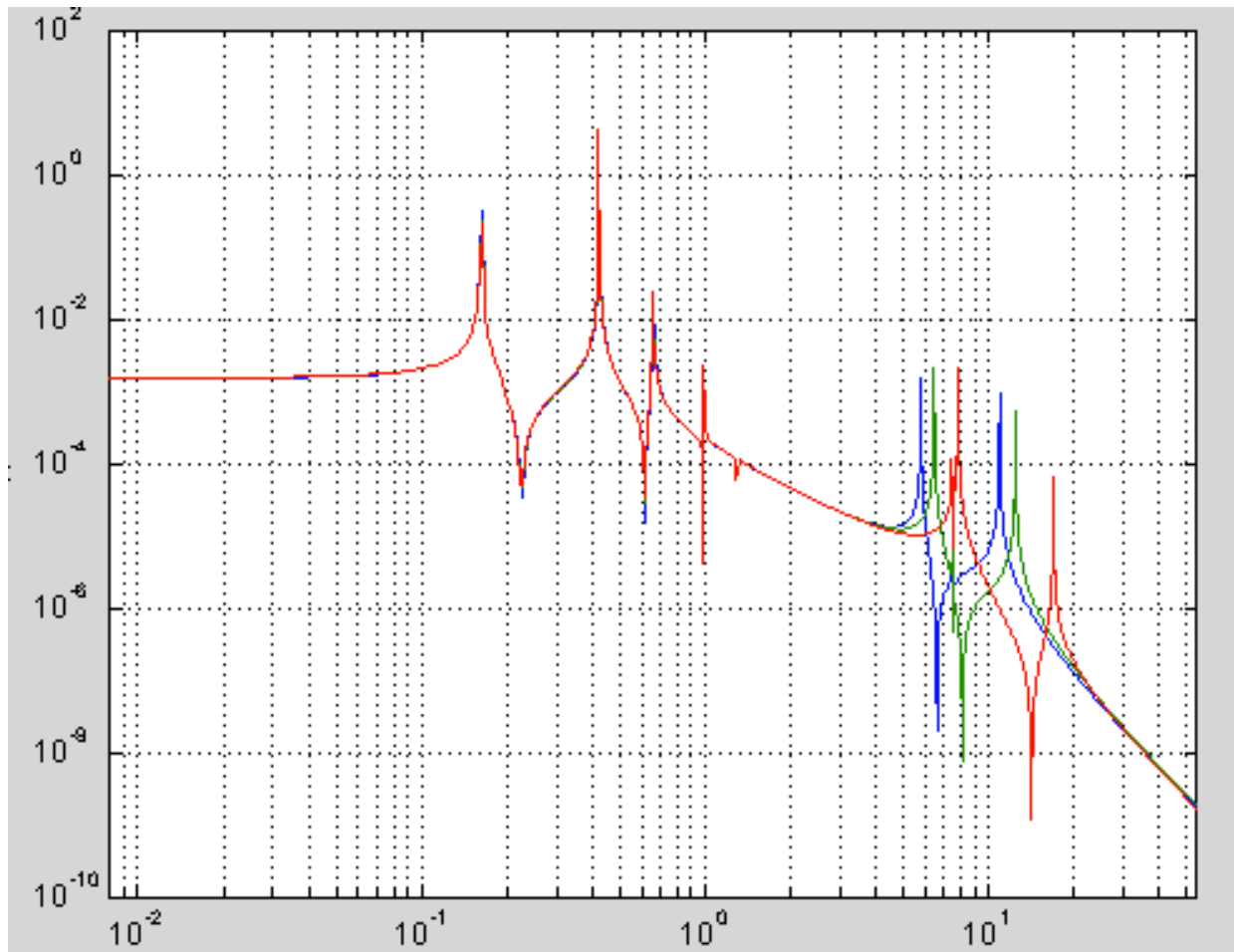
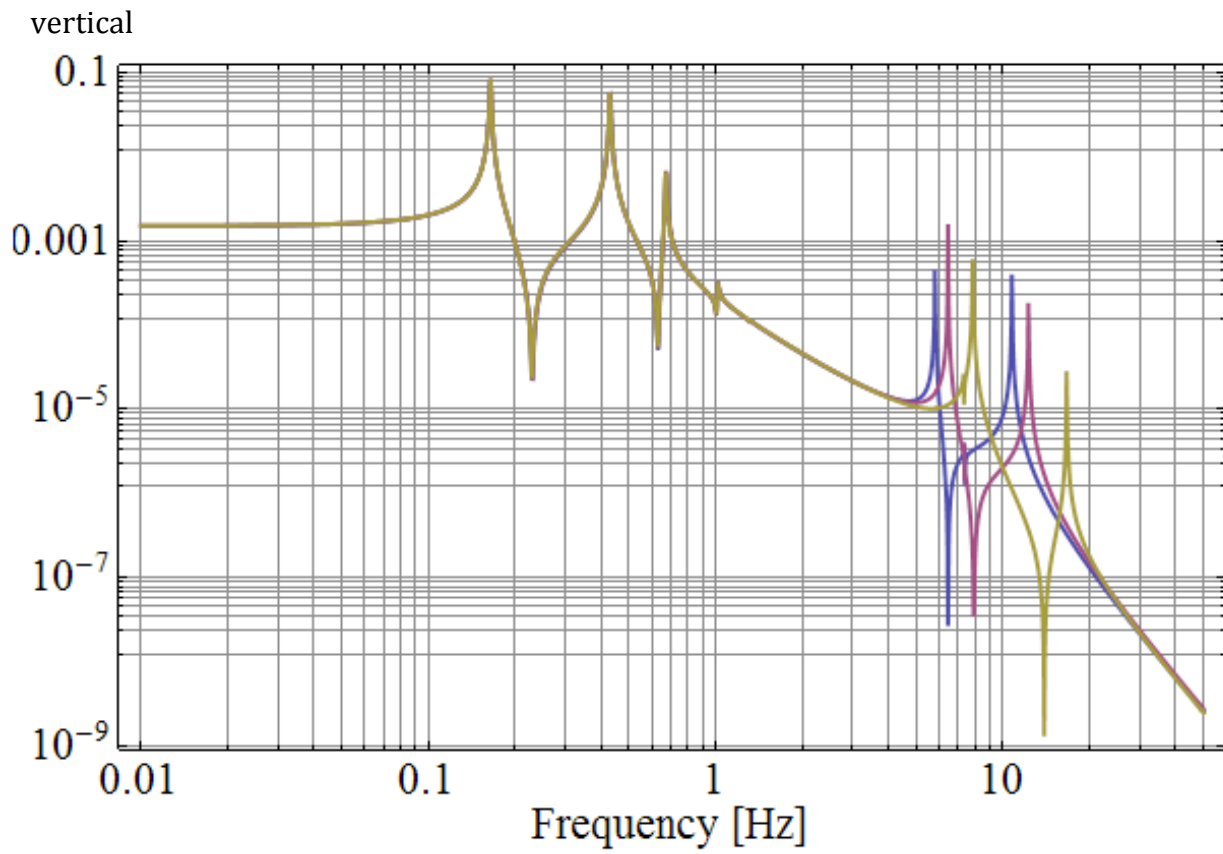


NO: relevant structures OK, but still some differences in frq. locations and some groups of coupling that are in my case absent (the pair around 0.57 Hz is an example)

roll

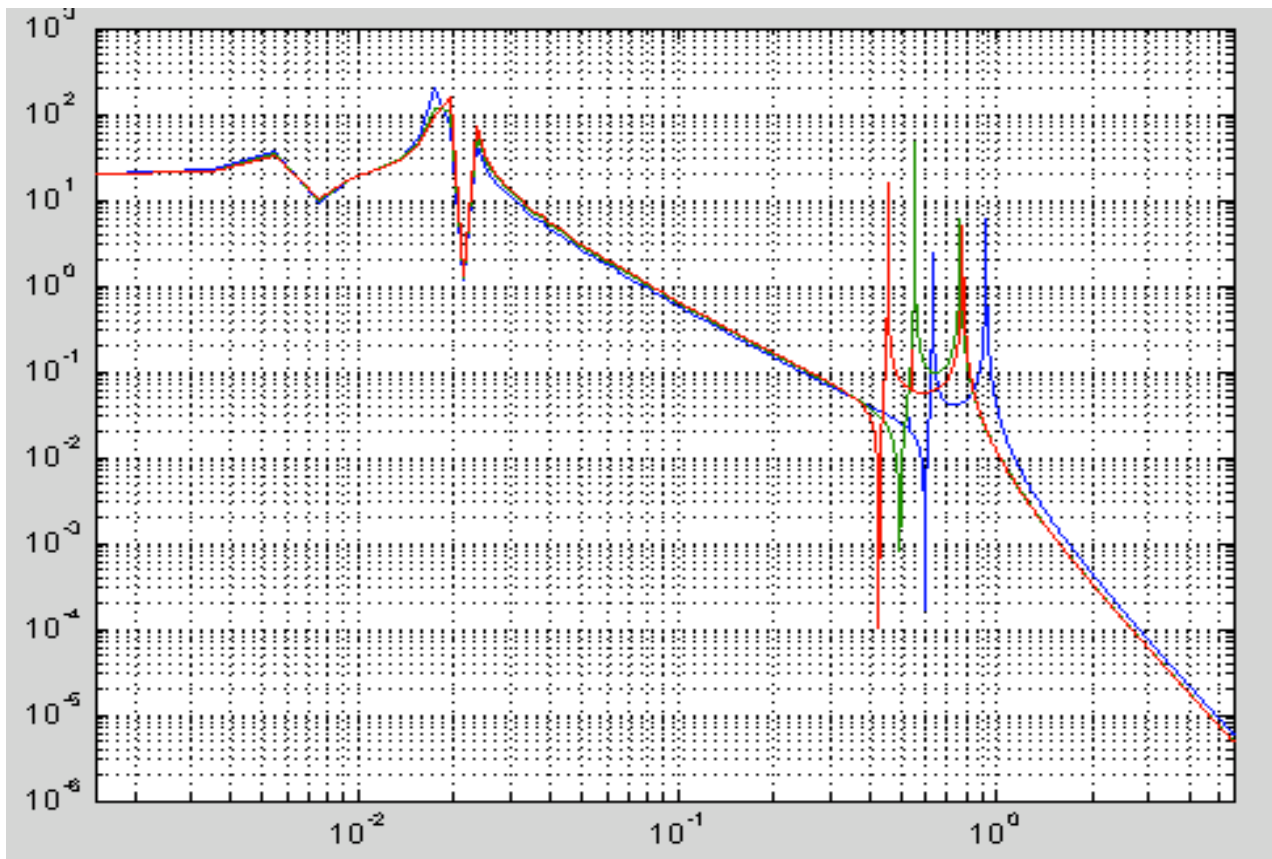
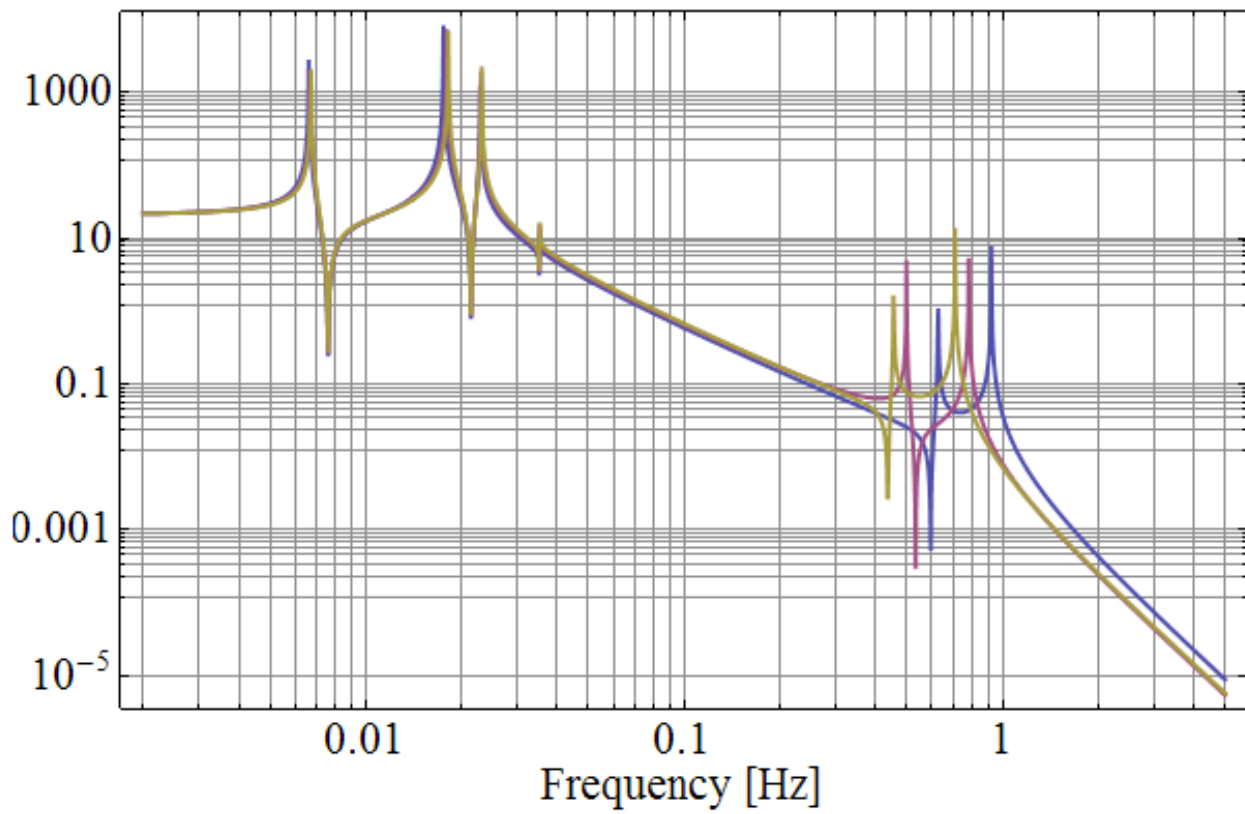


NO: group around 5-10 Hz



OK

Yaw



~ OK: some difference in z/p inversion and position, in one case. It should be checked