

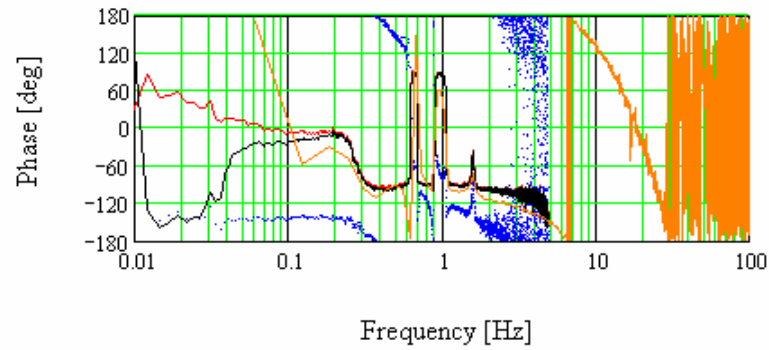
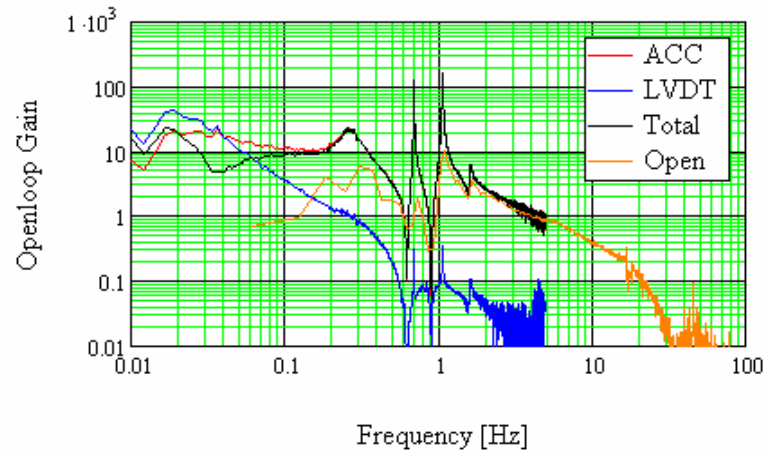
Filter parameters for IP control

March 5, 2008

R. Takahashi

NM1

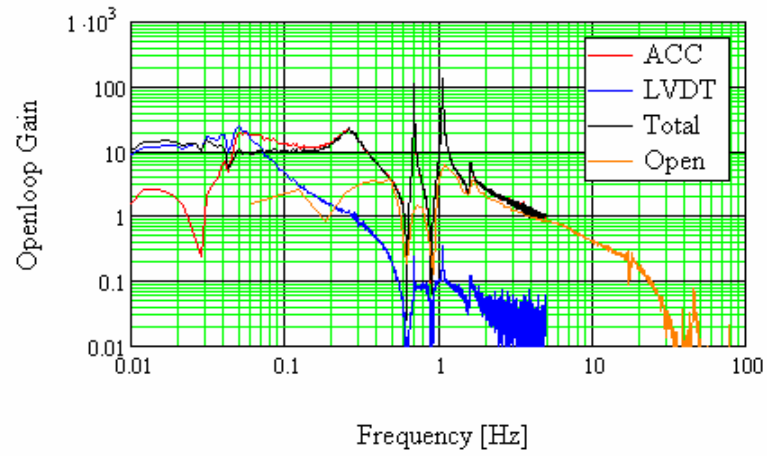
X



ACC		G=-2.5				
Bank		1	2	3	4	5
Pole[Hz]		0.27	0.2	10	20	40
Qp		3			1	1
Zero[Hz]		0.27	20	1	70	40
Qz		1			1	5
LVDT		G=7.8				
Bank		1	2	3	4	
Pole[Hz]		0.6	0.906	0.7	0.001	
Qp		1	10			
Zero[Hz]		0.711	1.083	0.07	0.01	
Qz		50	30			

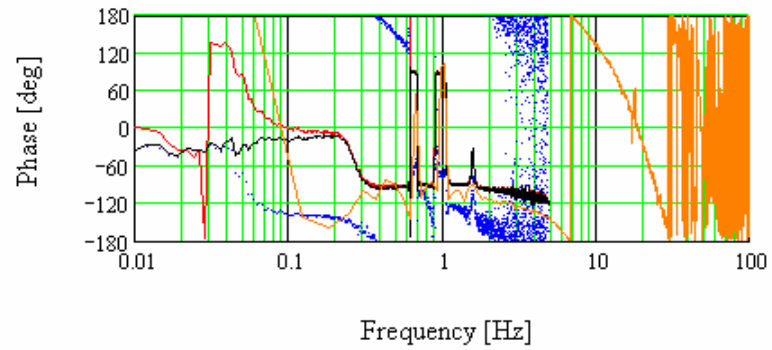
NM1

Y



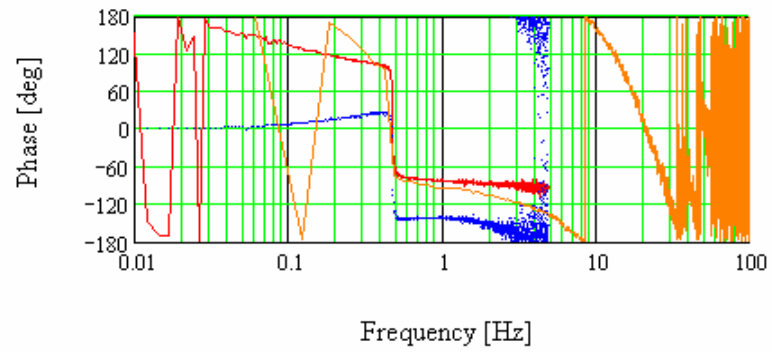
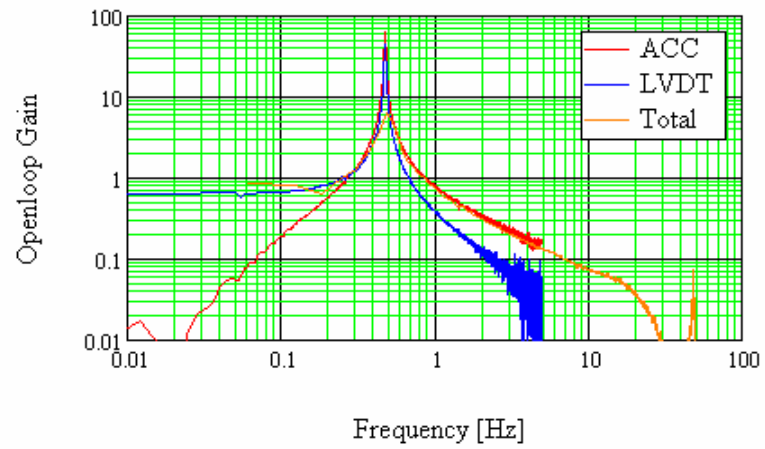
ACC		G=-2.5				
Bank		1	2	3	4	5
Pole[Hz]		0.27	0.2	10	20	40
Qp		3			1	1
Zero[Hz]		0.27	20	1	70	40
Qz		1			1	5

LVDT		G=7.8			
Bank		1	2	3	4
Pole[Hz]		0.6	0.916	0.7	0.001
Qp		1	10		
Zero[Hz]		0.703	1.082	0.07	0.01
Qz		50	30		



NM1

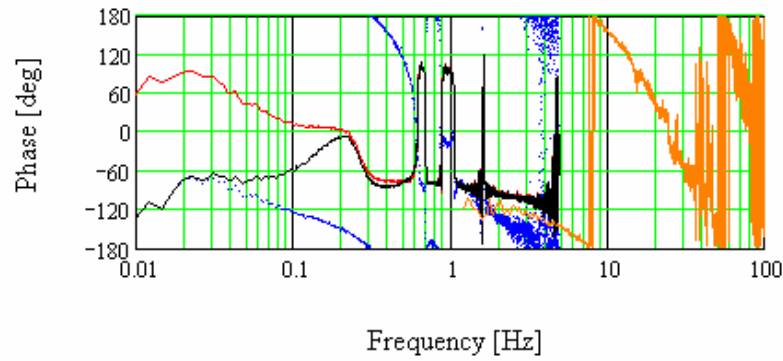
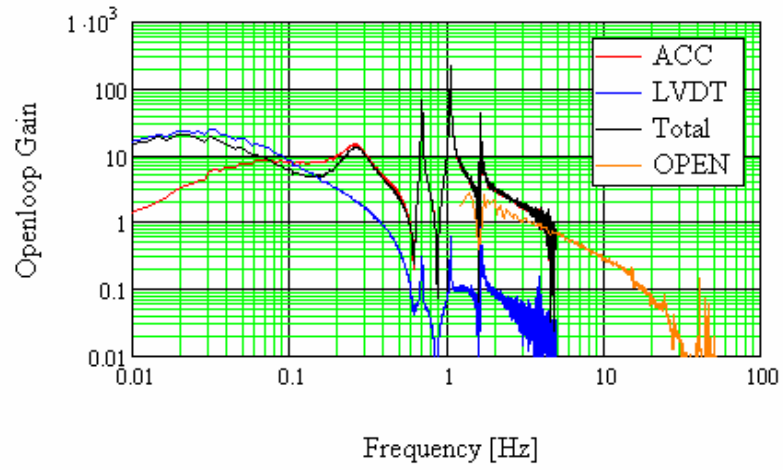
θ



ACC	G=-0.5		
Bank	1	2	3
Pole[Hz]	0.1	20	10
Qp	1	1	1
Zero[Hz]	10	70	1
Qz		1	
LVDT	G=1		
Bank	1		
Pole[Hz]	3		
Qp			
Zero[Hz]	0.5		
Qz			

NM2

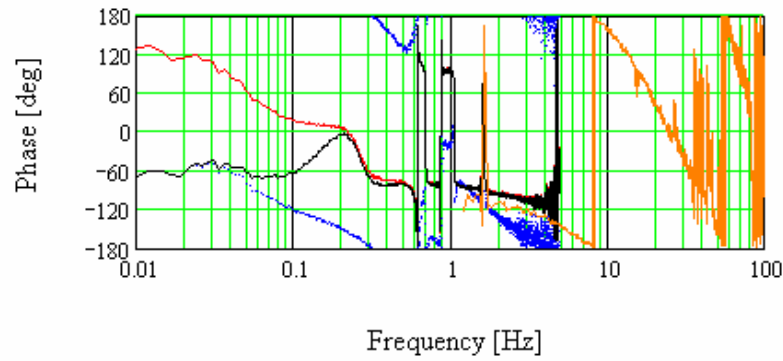
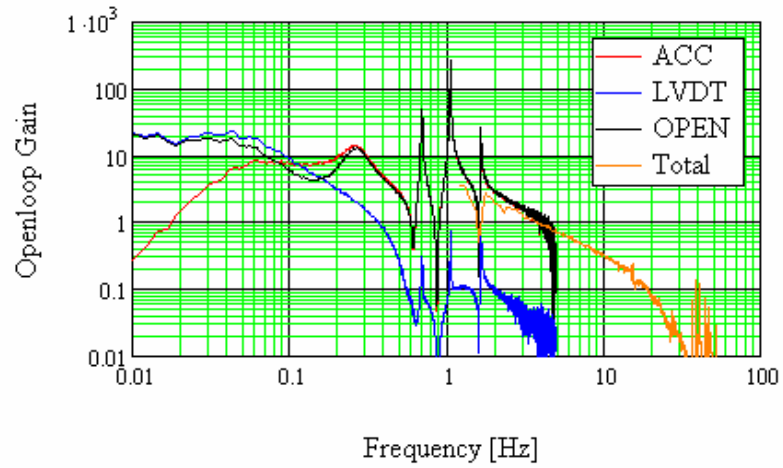
X



ACC		G=-2.3			
Bank		1	2	3	4
Pole[Hz]		0.27	0.4	10	20
Qp		3			1
Zero[Hz]		0.27	70	1	70
Qz		1			1
LVDT		G=12			
Bank		1	2	3	4
Pole[Hz]		0.6	0.9	0.7	0.001
Qp		1	1		
Zero[Hz]		0.71	1.08	0.03	0.01
Qz		20	20		

NM2

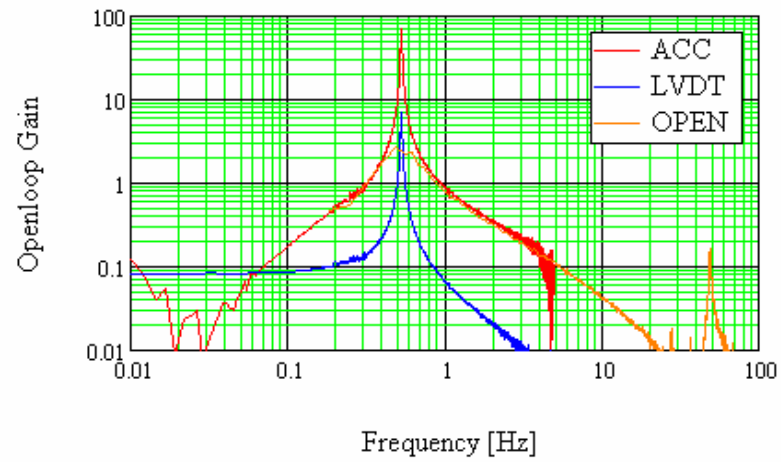
Y



ACC		G=-3.5			
Bank		1	2	3	4
Pole[Hz]		0.27	0.4	10	20
Qp		3			1
Zero[Hz]		0.27	70	1	70
Qz		1			1
LVDT		G=12			
Bank		1	2	3	4
Pole[Hz]		0.6	0.9	0.7	0.001
Qp		1	1		
Zero[Hz]		0.71	1.08	0.03	0.01
Qz		20	20		

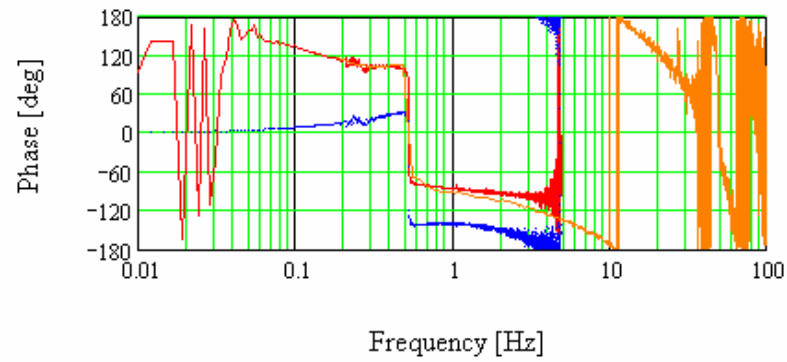
NM2

θ



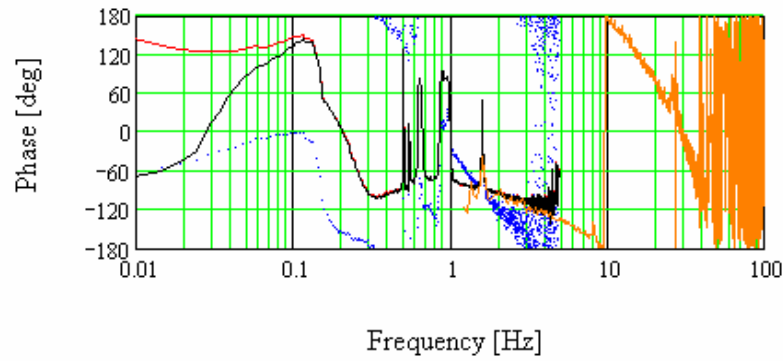
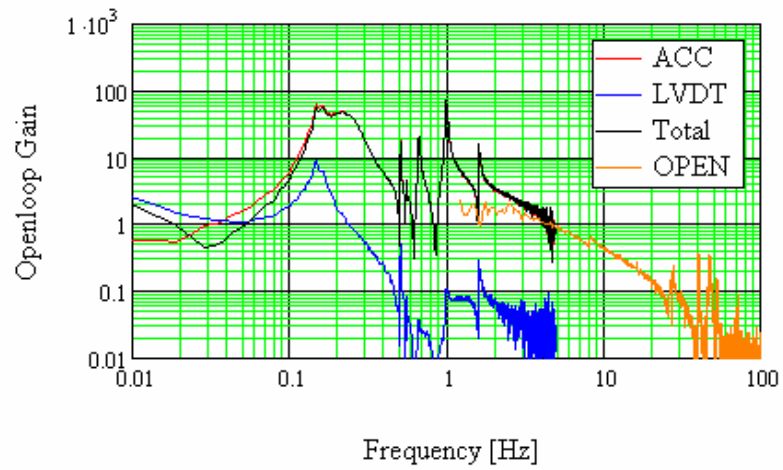
ACC	G=-0.8	
Bank	1	2
Pole[Hz]	0.1	10
Qp		1
Zero[Hz]	50	1
Qz		1

LVDT	G=0.2	
Bank	1	
Pole[Hz]	3	
Qp		
Zero[Hz]	0.5	
Qz		



EM1

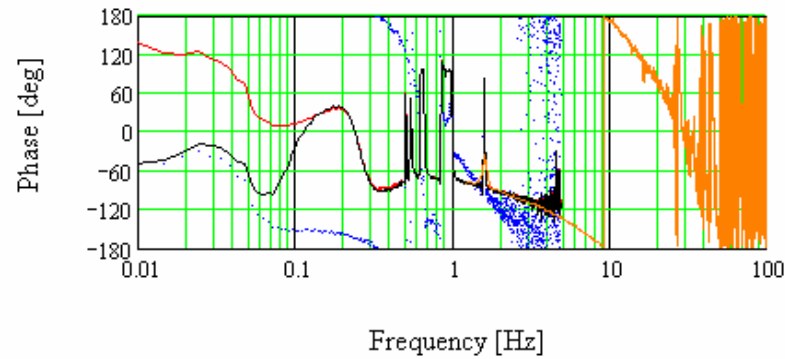
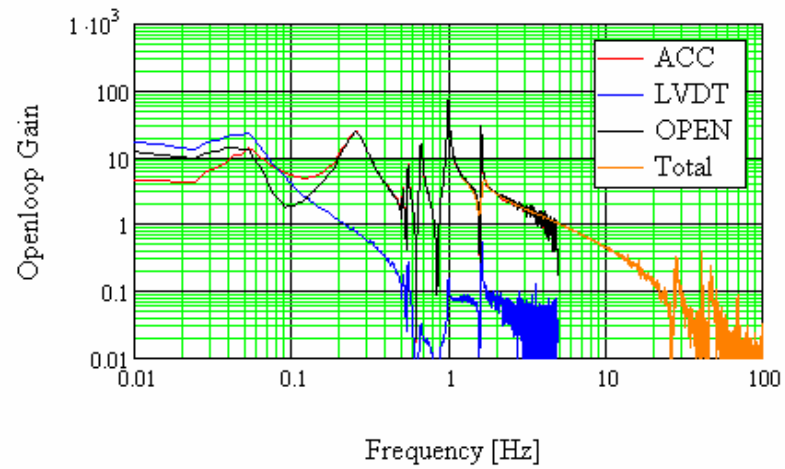
X



ACC		G=-100			
Bank		1	2	3	4
Pole[Hz]		0.27	0.22	0.01	1
Qp		3	3		
Zero[Hz]		0.27	0.22	0.15	70
Qz		1	1		
LVDT		G=-60			
Bank		1	2	3	4
Pole[Hz]		0.7	1	1	0.001
Qp		1	1		
Zero[Hz]		0.68	1	0.1	0.03
Qz		20	20		

EM1

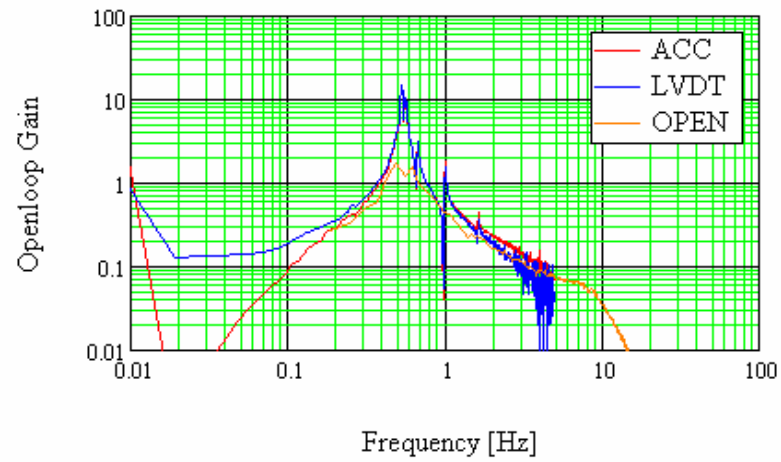
Y



ACC		G=-20			
Bank		1	2	3	4
Pole[Hz]		0.27	0.25	0.01	1
Qp		3	3		
Zero[Hz]		0.27	0.25	0.05	70
Qz		1	1		
LVDT		G=20			
Bank		1	2	3	4
Pole[Hz]		0.7	1	1	0.001
Qp		1	1		
Zero[Hz]		0.68	1	0.1	0.01
Qz		20	20		

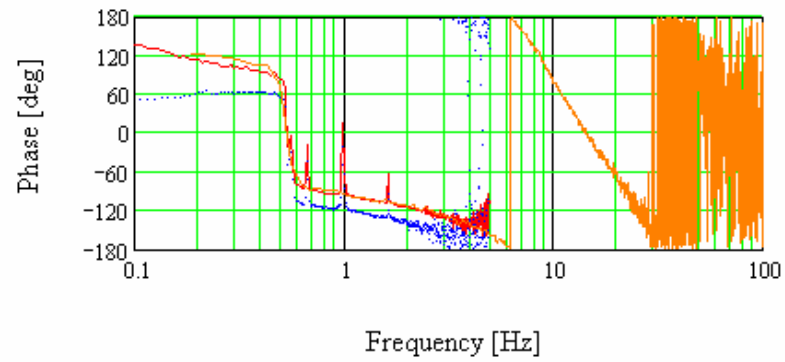
EM1

θ



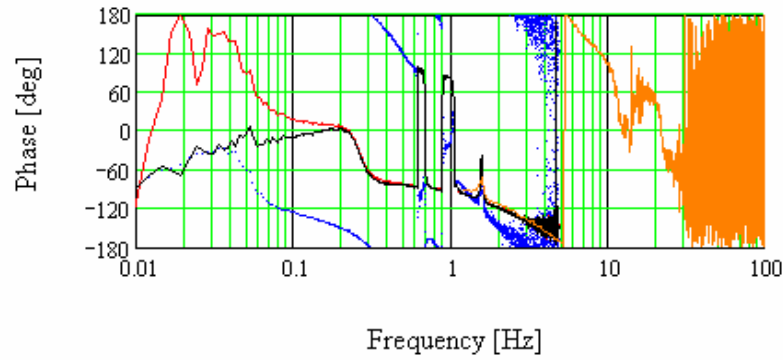
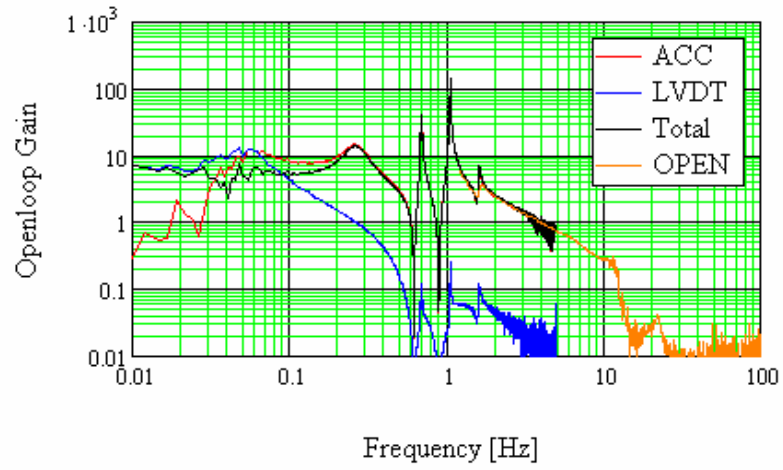
ACC	G=-2		
Bank		1	2
Pole[Hz]		0.1	10
Qp			1
Zero[Hz]		70	70
Qz			1

LVDT	G=-1		
Bank		1	
Pole[Hz]		3	
Qp			
Zero[Hz]		0.1	
Qz			



EM2

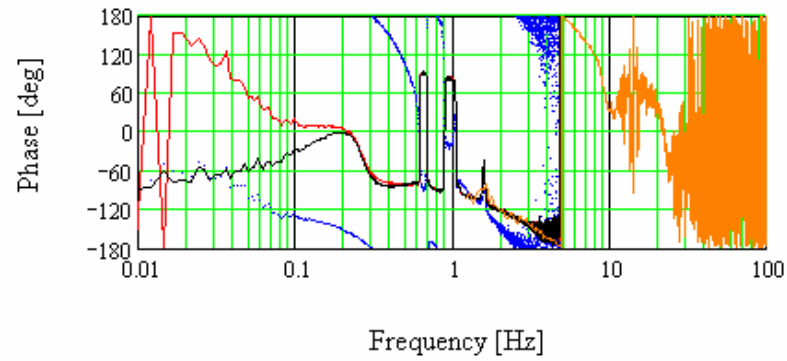
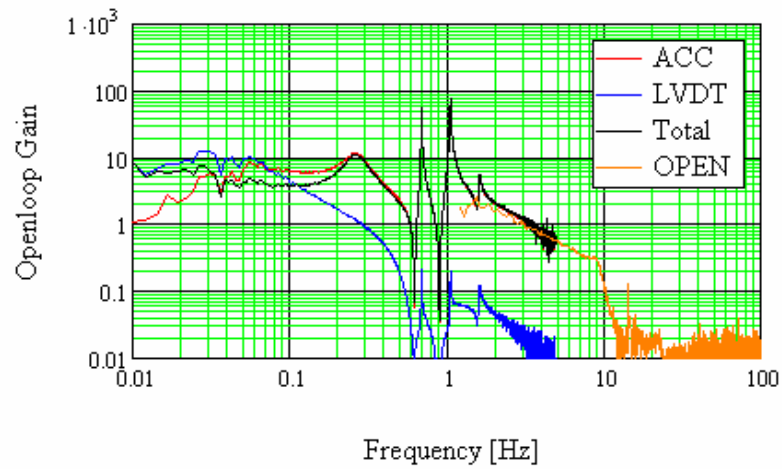
X



ACC		G=-1.2					
Bank		1	2	3	4	5	6
Pole[Hz]		0.27	12	23	0.4	10	10
Qp		3	1	1			
Zero[Hz]		0.27	12	23	70		
Qz		1	2	5			
LVDT		G=-21					
Bank		1	2	3	4		
Pole[Hz]		0.6	0.9	0.7	0.001		
Qp		1	1				
Zero[Hz]		0.7	1.06	0.03	0.01		
Qz		20	20				

EM2

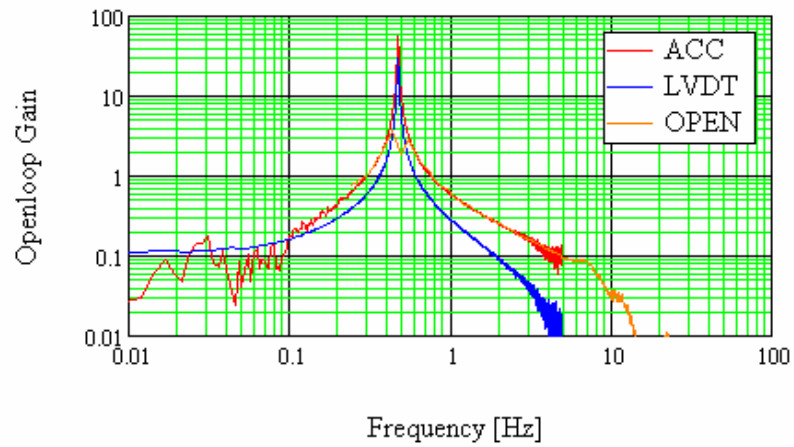
Y



ACC		G=-1.2					
Bank		1	2	3	4	5	6
Pole[Hz]		0.27	9	23	0.4	10	10
Qp		3	1	1			
Zero[Hz]		0.27	9	23	70	1	1
Qz		1	2	5			
LVDT		G=-21					
Bank		1	2	3	4		
Pole[Hz]		0.6	0.9	0.7	0.001		
Qp		1	1				
Zero[Hz]		0.7	1.06	0.03	0.01		
Qz		20	20				

EM2

θ



ACC	G=0.3			
Bank		1	2	3
Pole[Hz]		0.1	10	10
Qp			1	1
Zero[Hz]		50		
Qz			1	1
LVDT	G=0.7			
Bank		1		
Pole[Hz]		2		
Qp				
Zero[Hz]		0.1		
Qz				

